

The Master's Choice

Geistlich No. 1 biomaterials¹⁸⁻²⁴ combined
in Geistlich Combi-Kit Collagen



> Ideal for Ridge Preservation
and Minor Augmentation¹⁻⁵

> High Biofunctionality²⁻⁸

> Scientifically Proven¹⁻⁸

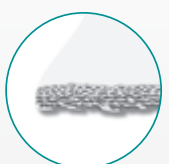
Geistlich Combi-Kit Collagen: the ideal combination



Geistlich Bio-Oss[®] Collagen:
Shapeable and malleable.⁹

Key benefits of Geistlich Bio-Oss[®] Collagen

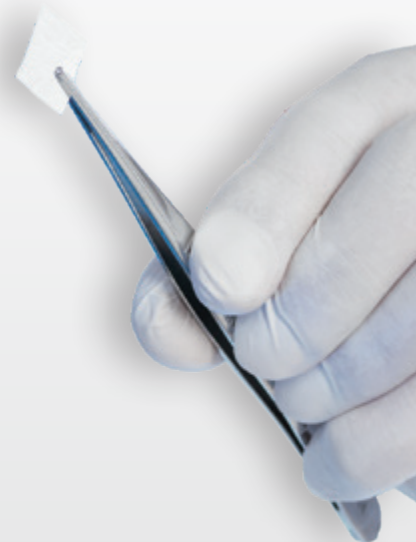
- > Geistlich Bio-Oss[®] granules supports long-term stability of bone volume through slow resorption^{10,11}
- > The collagen component allows ideal shaping⁷
- > Proven success^{4,5}



Geistlich Bio-Gide[®]:
Native Collagen Membrane. High Therapy Safety.

Key benefits of Geistlich Bio-Gide[®]

- > The unique bilayer structure allows for uneventful wound healing^{12,16} and optimal bone regeneration^{13,17}
- > Hydrophilicity, flexibility and tear resistance ensure easy handling⁹
- > High therapy safety and predictable results proven with long-term studies^{14,15}

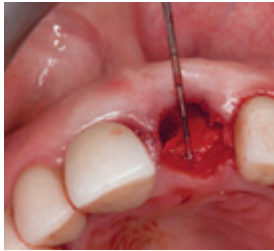




Dr. Karl-Ludwig Ackermann†, Filderstadt, Germany:

“The reliable solution for Ridge Preservation with alveolar defects.”

“Alveolar management with Geistlich Bio-Oss® Collagen, and additionally with the Geistlich Bio-Gide® membrane in compromised alveoli, is a must for me and my patients to achieve functionally and aesthetically good outcomes – regardless whether I intend to implant after tooth extraction or provide a purely prosthetic solution. In my opinion, for Ridge Preservation, the Geistlich Combi-Kit Collagen is the most reliable solution.”



Situation after extraction of a tooth with root caries. Probing at buccal alveolar wall is shown.



Use of Geistlich Bio-Oss® Collagen in Ridge Preservation (dehiscence on labial-crestal alveolar wall).



Covering of the Geistlich Bio-Oss® Collagen with a Geistlich Bio-Gide® membrane for lingual and labial subperiosteal stabilization.



Sufficient number of interrupted sutures of a palatally harvested free gingival punch (tissue punch technique).



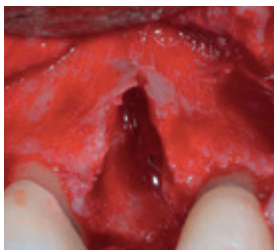
Transgingival view of the inserted Camlog Promote Plus screw implant (7.5 months after Ridge Preservation).



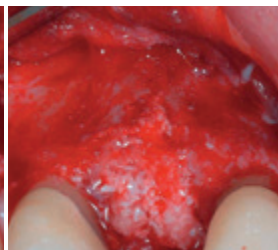
Prof. Maurício Araújo, Maringá, Brazil:

“Socket grafting with Geistlich Combi-Kit Collagen promotes the maintenance of the ridge profile.”

“Geistlich Bio-Oss® Collagen is a user friendly and reliable biomaterial. It can promote a proper ridge profile for the future restoration. I use Geistlich Bio-Gide® combined with Geistlich Bio-Oss® Collagen or Geistlich Bio-Oss® granules in extraction sockets which exhibit loss of one or two walls. Additionally, this combination works well in small defects such as periodontal or peri-implant lesions. I trust Geistlich biomaterials because they are supported by scientific evidence and years of successful clinical experience.”



Significant buccal bone dehiscence visible after extraction of tooth 14 and flap elevation.



Defect augmentation with Geistlich Bio-Oss® Collagen.



A Geistlich Bio-Gide® membrane is applied to cover the augmented area.



Occlusal view of the preserved ridge contour after 4 months.



4 months after extraction: widely formed new buccal bone.



Dr. Daniele Cardaropoli, Torino, Italy:

“I successfully use Geistlich Biomaterials for Ridge Preservation in an open healing approach.”

“I routinely use the Ridge Preservation technique after tooth removal. Following delicate extraction, the alveolus is filled with Geistlich Bio-Oss® Collagen. A Geistlich Bio-Gide® membrane is gently inserted into the sulcus without elevating a flap and secured in place with a cross-mattress suture. No connective tissue harvesting is needed to close the socket. After 3 to 4 weeks, a complete healing of the soft tissue can be observed over the previously exposed membrane, notably with creation of keratinized tissue and protection of the graft. After 4 months, the implant surgery can be successfully completed in a well preserved bone ridge.”



Hopeless lower premolar. A flapless approach is preferred, leaving the interdental papillae intact and preserving the cortical bone walls.

After tooth extraction, the socket is augmented with Geistlich Bio-Oss® Collagen, gently packed to completely fill the alveolus.

A Geistlich Bio-Gide® membrane is gently inserted into the sulcus and secured by a cross-mattress suture, allowing open healing.

4 months after extraction, complete healing and maturation of both soft and hard-tissues is achieved.

12-months follow-up: the use of Geistlich Bio-Oss® Collagen and Geistlich Bio-Gide® preserved the ridge volume. A safe implant placement is possible.



Dr. Ronald Jung, Zurich, Switzerland:

“Peri-implant defects can be treated successfully with the Geistlich Combi-Kit Collagen.”

“For buccal, peri-implant defects in the aesthetic zone, Geistlich Combi-Kit Collagen provides the material needed to build volume and to mimic natural root prominence. The Geistlich Bio-Oss® Collagen is cut L-shaped and adapted to the defect. Through this, the peri-implant soft-tissue is supported and yields an optimally constructed contour. The 10% share of collagen may contribute to stabilization of the blood clot and holds the Geistlich Bio-Oss® particles together.”



After implant placement a bone dehiscence associated with a one wall defect is observed in region 11.

After application of Geistlich Bio-Oss® particles to the defect, Geistlich Bio-Oss® Collagen is cut in an L-shape form and adapted to the site for volume contour.

Geistlich Bio-Oss® Collagen is carefully applied. Geistlich Bio-Oss® particles are used in addition to round the edges.

The defect is covered with a Geistlich Bio-Gide® membrane.

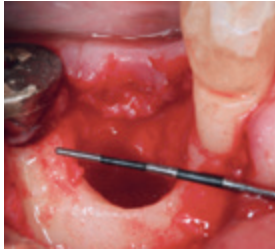
At 10 months: an optimal ridge contour is achieved.



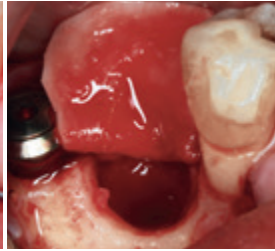
Prof. Mariano Sanz, Madrid, Spain:

“Geistlich products have earned my trust over the years.”

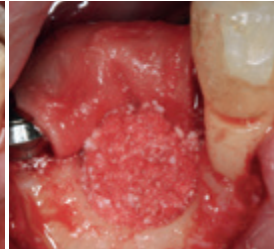
“I use Geistlich Biomaterials since several years but have only recently discovered Geistlich Bio-Oss® Collagen. It has better handling properties compared to Geistlich Bio-Oss® granules, is easier to shape and quicker to apply. In my opinion, Geistlich Combi-Kit Collagen is the ideal choice for extraction socket management and also for the treatment of narrow, deep defects.”



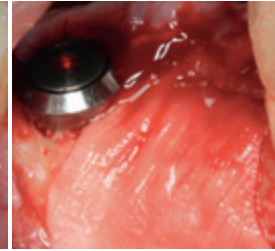
Extraction socket after tooth removal. Predominant socket width due to a circumferential periodontal defect down to the apex.



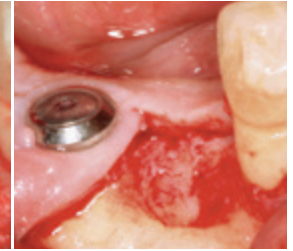
Placement of Geistlich Bio-Gide® between the lingual flap and bone crest to facilitate the defect closure.



The socket is filled with Geistlich Bio-Oss® Collagen, gently packed to completely fill the alveolus.



The augmented socket is protected by the membrane, extending its margins to the native bone. Flaps are prepared to obtain primary closure of the regenerated site.



Surgical view of the augmented site before implant site preparation 4 months after Ridge Preservation.



The Dream-Team:
Geistlich Bio-Oss® Collagen
and Geistlich Bio-Gide®





More details about our distribution partners:
www.geistlich-biomaterials.com

Manufacturer

Geistlich Pharma AG
Business Unit Biomaterials
Bahnhofstrasse 40
6110 Wolhusen, Switzerland
Phone +41 41 492 55 55
Fax +41 41 492 56 39
www.geistlich-biomaterials.com

Affiliate Australia and New Zealand

Geistlich Pharma Australia Pty Ltd.
The Zenith – Tower A
Level 21, Suite 21.01
821 Pacific Highway
NSW 2067 Chatswood, Australia
Phone +61 1800 776 326
Fax +61 1800 709 698
info@geistlich.com.au
www.geistlich.com.au

Affiliate Great Britain and Ireland

Geistlich Sons Limited
1st Floor, Thorley House
Bailey Lane
Manchester Airport
Manchester M90 4AB, Great Britain
Phone +44 161 490 2038
Fax +44 161 498 6988
info@geistlich.co.uk
www.geistlich.co.uk

Affiliate North America

Geistlich Pharma North America Inc.
202 Carnegie Center
Princeton, NJ 08540 USA
Phone +1 855 799 5500
info@geistlich-na.com
www.geistlich-na.com

Distribution Canada

HANSAmEd Ltd.
2830 Argentia Road
Unit 5-8
L5N 8G4 Mississauga, Canada
Phone +1 800 363 2876
Fax +1 800 863 3213
orders@hansamed.net
www.hansamed.net



Geistlich Combi-Kit Collagen

Geistlich Bio-Oss® Collagen: 100 mg
Geistlich Bio-Gide®: 16 x 22 mm



Perio-System Combi-Pack

Geistlich Bio-Oss® Collagen: 100 mg
Geistlich Bio-Gide® Perio: 16 x 22 mm



Geistlich Bio-Oss®

Spongy bone substitute
Small granules 0.25 mm – 1 mm. Available sizes:
0.25 g ≈ 0.5 cm³, 0.5 g ≈ 1 cm³, 1 g ≈ 2 cm³, 2 g ≈ 4 cm³



Geistlich Bio-Oss® Collagen

Geistlich Bio-Oss® (small granules)
+ 10% collagen (porcine)
Available sizes: 50 mg (2.5 x 5.0 x 7.5 mm), 100 g (5.0 x 5.0 x 7.0 mm), 250 mg (7.0 x 7.0 x 7.0 mm), 500 mg (10.0 x 10.0 x 7.0 mm)



Geistlich Bio-Gide®

Bilayer collagen membrane
Available sizes: 13 x 25 mm, 25 x 25 mm, 30 x 40 mm



Geistlich Bio-Oss®

Spongy bone substitute
Large granules 1 mm – 2 mm
Available sizes: 0.5 g ≈ 1.5 cm³, 1 g ≈ 3 cm³, 2 g ≈ 6 cm³

References

- Schulz MC et al., Aust Dent J. 2016 Mar;61(1):62–70 (Clinical study).
- Araújo MG et al., Clin Oral Implants Res. 2015 Apr;26(4):407–412 (Pre-clinical study).
- Rocuzzo M et al., Int J Periodontics Restorative Dent. 2014 Nov–Dec;34(6):795–804 (Clinical study).
- Jung RE et al., J Clin Periodontol. 2013 Jan;40(1):90–8 (Clinical study).
- Cardaropoli D et al., Int J Periodontics Restorative Dent. 2012 Aug;32(4):421–30 (Clinical study).
- Nart J et al., Clin Oral Implants Res. 2017 Jul;28(7):840–848 (Clinical study).
- Trevisiol L et al., J Craniofac Surg. 2012 Sep;23(5):1343–8 (Clinical study).
- Jung RE et al., Int J Periodontics Restorative Dent. 2004 Dec;24(6):545–53 (Clinical study).
- Data on file. Geistlich Pharma AG, Wolhusen, Switzerland (Pre-clinical study).
- Orsini G et al., Oral Dis. 2007, Nov;13(6):586–93 (Clinical study).
- Mordenfeld A et al., Clin. Oral Implant Res. 2010, Sep;21(9):961–70 (Clinical study).
- Becker J et al., Clin Oral Implant Res. 2009, 20(7):742–49 (Clinical study).
- Perelman-Karmon et al., Int J Periodontics Restorative Dent. 2013,32(4):459–65 (Clinical study).
- Jung RE, et al., Clin Oral Implants Res. 2013 Oct;24(10):1065–73 (Clinical study).
- Buser D. et al., J Periodontol. 2011;82(3):342–49 (Clinical study).
- Tal H et al. Clin Oral Implants Res. 2008; 19(3) : 295-302. (Clinical study)
- Zitzmann NU et al. Int J Oral Maxillofac Implants. 12, 1997;844-852. (Clinical study)
- US market report suite for dental bone graft substitutes and other biomaterials, iDATA_USDBGS19_MS, Published in January 2019 by iData Research Inc., 2019. (Market Research)
- Europe market report suite for dental bone graft substitutes and other biomaterials, iDATA_EUDBGS19_MS, Published in July 2019 by iData Research Inc., 2019. (Market Research)
- China market report suite for dental bone graft substitutes and other biomaterials, iDATA_CHDBGS18_MS, Published in November 2018 by iData Research Inc., 2018. (market research)
- Australia market report suite for dental bone graft substitutes and other biomaterials, iDATA_AUDBGS18_MS, Published in November 2018 by iData Research Inc., 2018. (Market Research)
- India market report suite for dental bone graft substitutes and other biomaterials, iDATA_INDBGS18_MS, Published in November 2018 by iData Research Inc., 2018. (Market Research)
- South Korea market report suite for dental bone graft substitutes and other biomaterials, iDATA_SKDBGS18_MS, Published in November 2018 by iData Research Inc., 2018. (Market Research)
- Japan market report suite for dental bone graft substitutes and other biomaterials, iDATA_JPDBGS18_MS, Published in November 2018 by iData Research Inc., 2018. (Market Research)

* Product availability may vary from country to country