



2019

# Product Catalog Digital Technologies

CLOSE TO YOU

---

Names marked with ® are registered trademarks of the manufacturers. For incorrect information in this price list and its consequences we assume no liability. Our general terms and conditions apply. All prices are net prices excl. VAT. We reserve the right to make technical changes, price changes and delivery options. Additional costs for training, commissioning and installations may occur.

<b>01. Digital Impression</b>		<b>5</b>
	DiOS® 4.0	6
	DiOS® 4.0 set	8
	DiOS® 4.0 software	9
<b>02. CAD-Systems</b>		<b>11</b>
	T 500 system	12
	DD Argus M2 UHD system	14
	DD Argus M2 HD system	16
	DD Argus mini system	18
	CAD systems comparison	20
	CAD software	22
	CAD accessories	27
<b>03. LabTec Milling Machines</b>		<b>29</b>
	LabTec ONE	30
	Lab Tec 25 Pro Loader	31
	LabTec 25 dry	32
	LabTec 25 wet	33
	LabTec 35	34
	LabTec 35 Loader	35
	LabTec 35 Pro	36
	LabTec 35 Pro Loader	37
<b>04. CAM Software</b>		<b>39</b>
	DD smartCAM 2.0	40
<b>05. CAM Accessories</b>		<b>43</b>
	Accessories for milling machines	44
	Suction systems	46
<b>06. Milling Tools</b>		<b>47</b>
	Milling tools with 6,0 mm shank	48
	Milling tools with 3,0 mm shank	50
<b>07. Sintering furnaces and firing unit</b>		<b>51</b>
	DD Argus fire speed	52
	DD Argus fire 674	53
	VITA SMART.FIRE	54







# 01. Digital Impression

# **DiOS<sup>®</sup> 4.0**

Direct Intraoral Scanning

The easy entry into the  
digital dentistry



With the DiOS<sup>®</sup> 4.0 we offer you an innovative intraoral scanner,  
which combines all the advantages of digital impressions for you.

DiOS<sup>®</sup> – Direct Intraoral Scanning – is an open system with no license fee!

## What makes DiOS® 4.0 special?

Unlike conventional intraoral scanners, this scanner uses two cameras from different perspectives. The results are fast and high-precision images. The DiOS® 4.0 is intuitive to use and with only 276 g very light. Its sophisticated design makes digital impressions equally comfortable for dentists and patients alike.

The detailed images produced by the DiOS® 4.0, in combination with their full-color 3D color recording, allowing the precise localization of the preparation margin as well as distinction between soft tissue and tooth substance. Another unique feature is the choice of the laboratory between different data formats (.stl, .ply or .obj). Therefore all common software solutions can work together with the DiOS® 4.0. The scanner is the ideal start of the digital process chain between practice and laboratory.



### Powderless

The use of powder is not required.



### Flexibility

DiOS® 4.0 uses an open CAD/CAM system – for easy export of your .stl data.



### High Return on Investment

Attractive price model compared to offers of known market competitors.



### Very good resolution

Realistic, detailed illustrations of the oral cavity are generated.



### Impressive speed

With its two high-speed cameras, the DiOS® scans quickly and efficiently.



### Small tip

The easy handling is comfortable for the dentist and the patient.

Technical data	Description
Tip size	19 x 15,2 mm (W x H)
Overall handpiece length	266 mm
Weight	276 g
Imaging technology	3D-in-motion video technology
Color	3D full color streaming capture
Connectivity	USB 3.0
Scanning area	14 x 13 mm
Scan depth	up to 21 mm
Storage capacity* (in the Medit-Cloud)	Standard capacity 10 GB (optional extension to 1 TB for 20,- EUR per month)

Art.-no.	Price (euro/net)
CS 4001	15.900,00

\*In the first year, a storage capacity of 1 TB is included.

## DiOS® 4.0 with practice station



**22" Touch screen**  
allows the patient to follow the scanning process

**High performance notebook**

**Drawer hiding notebook, cooling pad and cable**

**Disinfectable mouse and keyboard**

**Swiveling table for keyboard** ensures best interaction with patients

**DiOS® 4.0 Direct Intraoral Scanning**






**Steplessly height-adjustable** for standing and sitting activities

**Surfaces easily disinfectable**

**Highest mobility in practice**

**Smooth running rollers** for all surfaces

## DiOS 4.0 – complete set

Description	Information	Example pictures
DiOS 4.0 Intraoral scanner	Total handpiece length: 266 mm Weight 276 g	
Hochleistungs-Notebook für für DiOS 4.0	i7 – 8750 or higher at least 16 GB RAM Graphics card Geforce GTX 1060 or higher Windows 10 1 x USB 3.0	
Touch screen	22" Full HD, LED	
DiOS 4.0 Scan Scooter	Mobile practice station H x W x D: 1654 x 568 x 728 mm Weight: 24,5 kg	
Mouse and keyboard	washable easy to disinfect	
Inkl. Installation und Schulung		
Art.-no.	Contents	Price (euro/net)
CS 4001.2	DiOS 4.0 – complete set	20.900,00

DiOS® is manufactured by MEDIT

## Perfect Software and Hardware Combination

Using the DiOS® 4.0 and its accompanying software is a pleasant experience. It is easy to understand for all users, and it is simple to incorporate the system into your practice or lab.

### User-friendly UI

Our software user interface is intuitive with a streamlined process so you can spend less time on scanning and more time on diagnosing and treating your patient.



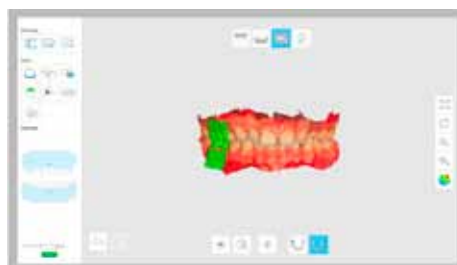
### Undercut Area Analysis

This feature allows you to analyze the undercut area based on insertion direction. You can set the insertion direction via two methods (auto or manual direction).



### Automatic Alignment

The DiOS® 4.0 scan software automatically finds the occlusion with a simple scan of the bite.



### Occlusion Analysis

This feature displays any interference between the maxilla and mandible on an easy-to-read color map.



### Lock Area

You can lock the scan area by painting it and locked (colored) area will not be updated by further scanning. Use this feature to fix retracted gingiva after immediate scanning as it might collapse. You can still trim the locked surface. Deleted locked surface can be re-scanned.



### HD Camera

It is easy to take 2D images with 3D model data and share them with a laboratory.







The image features two circular lenses or optical components mounted on a dark, textured surface. The lens on the right is illuminated from within, casting a bright orange glow. The lens on the left is dark and unlit. A semi-transparent dark orange rectangular area is overlaid on the lower portion of the lenses, containing the text '02. CAD Systems' in white. At the bottom of the image, there is a blurred, bokeh effect of white light spots.

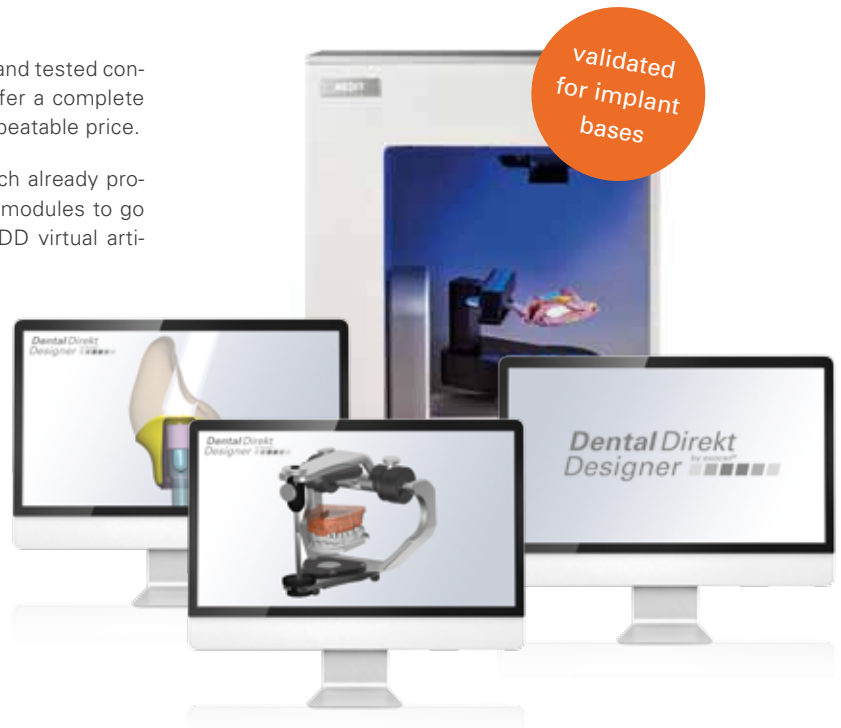
02.  
CAD Systems

## T500 by MEDIT

With our package, the T500 by MEDIT and the tried and tested construction software 3D-Designer by exocad®, we offer a complete solution that leaves nothing to be desired, at an unbeatable price.

Take advantage of our complete CAD system, which already provides you with two of the most popular extension modules to go with the 3D-Designer by exocad® software – the DD virtual articulator and the DD Abutment Creator.

- Optical phase shifting
- Excellent precision (< 7 µm)
- Extensive software
- Including 1 year support



### Scope of delivery

#### T500 Scanner by MEDIT

- 1 flexible multi-die plate
- 1 calibration panel
- 1 screw base jig
- 1 multi-die jig
- 1 Gum-base jig

#### Dental Direkt Designer BASIS by exocad®

The basic software has an immense range of functions at its command, including automatic preparation limits recognition.

#### PC

High performance PC with Intel Core i7, Windows 10 Pro 64-Bit, 24" FullHD monitor, keyboard and mouse

#### Dental Direkt CAD-Module

- DD virtual articulator
- DD Abutment Creator



You will find detailed descriptions of the individual components on the following pages

Art.-no.	Contents	Price (euro/net)
S 300	CAD complete set T500 by Medit, 3D-Designer Basis by exocad®, 2 CAD modules, PC + 1-day training + 1 year CAD support hotline per TeamViewer	17.490,00

T500 is manufactured by MEDIT



# T500 by MEDIT

Conquer the digital world with the smartest of its kind

Maximum productivity due to speed and intuitive operation, functionality and flexibility combined in one device. The T500 is the next generation of innovative scanners which sets new standards.

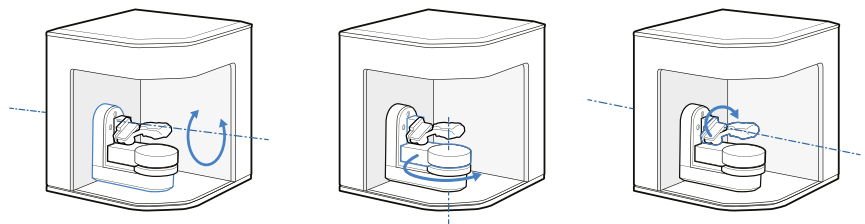


Technical data
Free data interface (.stl)
Multi die function
2 x 2.0 MP-HD camera
Accuracy: < 7 µm
Performance: 100 – 240V, 50 – 60 Hz
Weight 12 kg
Dimensions (W x H x D): 290 x 290 x 340 mm

Scan time	
Single-die	16 dies in 19 Sek.
Three-arch bridges	31 Sek.
14-arch bridges	31 Sek.
Full arch	12 Sek.

### Add on automatic 3-axis impression scan

- Two-sided automatic impression scan in just one step
- Same accuracy as model scans
- Speed-up of workflow
- Material cost savings



### The new all-rounder in our portfolio.

If you prefer it faster but also highly accurate.

- Maximum productivity in the workflow
- Flexible multi-scan up to 16 dies
- Imprint scan
- Intuitive operation
- Numerous intelligent features such as e.g. Touch sensor
- .stl files can be ex- and imported in every step
- Free-of-charge updates /-grades
- Integrated implant libraries
- Various accessories such as anti-multi-plate for 3 systems KaVo, Artex and SAM

## DD Argus M2 UHD system

With our package, the DD Argus M2 UHD and the tried and tested construction software 3D-Designer by exocad®, we offer a complete solution that leaves nothing to be desired, at an unbeatable price.

Take advantage of our complete CAD system, which already provides you with two of the most popular extension modules to go with the 3D-Designer by exocad® software – the DD virtual articulator and the DD Abutment Creator.

- Workflow optimised „SSS method“
- Excellent precision (< 5 µm)
- Extensive software
- Including 1 year support



### Scope of delivery

#### DD Argus M2 UHD Scanner

- 2 distance plates
- 1 calibration unit
- 1 multi-die adapter
- 2 non-slip mats
- 1 Splitcast-plate

#### Dental Direkt Designer BASIS by exocad®

The basic software has an immense range of functions at its command, including automatic preparation limits recognition.

#### PC

High performance PC with Intel Core i7, Windows 10 Pro 64-Bit, 24" FullHD monitor, keyboard and mouse

#### Dental Direkt CAD-Module

- DD virtual articulator
- DD Abutment Creator



You will find detailed descriptions of the individual components on the following pages

Art.-no.	Contents	Price (euro/net)
102.4	CAD complete set DD Argus M2 UHD, 3D-Designer Basis by exocad®, 2 CAD modules, PC + 1-day training + 1 year CAD support hotline per TeamViewer	21.990,00

# DD Argus M2 UHD

## Newest generation of optical 3D-UHD scanner

DD Argus M2 UHD light stripe scanner is the perfect allrounder for your laboratory and leaves nothing to be desired. Thanks to the tried and tested Stable Scan Stage Method (SSS), which allows for a pivot of 0° – 90° across the model, elaborate model fixation is no longer necessary. Quick and easy operation guarantees the shortest scan times. Thanks to the high precision of <math><5 \mu\text{m}</math> the DD Argus M2 UHD is also suitable for more complex, implant carrying works.



### Technical data

Free data interface (.stl)

Multi die function

2 x 5.0 MP-UHD camera

Accuracy: <math><5 \mu\text{m}</math>

Voltage: 110 – 240 V

Performance: 110 – 240 V, 50 – 60 Hz

Weight: 17 kg

Dimensions (W x H x D): 330 x 495 x 430 mm

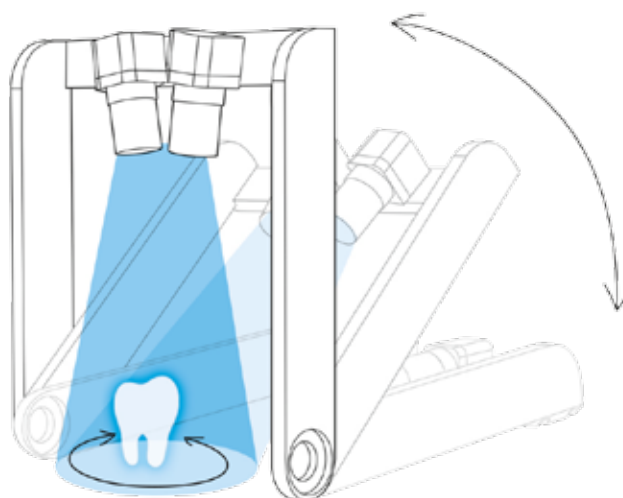
### Scan time

Detailed scan	47 Sek.
Overview scan	25 Sek.
Mandible/maxilla model	47 Sek.
Vestibular	12 Sek.
Multi die scan	45 Sek.

### Stable Scan Stage (SSS) Method®

Complex model fixation was yesterday

- SSS-method allows for pivot of 0 – 90° across the model
- Gripping model plate
- No additional tilting movement required
- No shifting or dropping of models
- Scanning of non-perforated surfaces
- Problem-free gingiva, scan body, wax-up and Situation model scans possible



## DD Argus M2 HD system

With our package, the DD Argus M2 HD and the tried and tested construction software 3D-Designer by exocad®, we offer a complete solution that leaves nothing to be desired, at an unbeatable price.

Take advantage of our complete CAD system, which already provides you with two of the most popular extension modules to go with the 3D-Designer by exocad® software – the DD virtual articulator and the DD Abutment Creator.

- Workflow optimised „SSS method“
- Excellent precision (< 10 µm)
- Extensive software
- Including 1 year support



### Scope of delivery

#### DD Argus M2 HD Scanner

- 2 distance plates
- 1 calibration unit
- 1 multi-die adapter
- 2 non-slip mats
- 1 Splitcast-plate

#### Dental Direkt Designer BASIS by exocad®

The basic software has an immense range of functions at its command, including automatic preparation limits recognition.

#### PC

High performance PC with Intel Core i7, Windows 10 Pro 64-Bit, 24" FullHD monitor, keyboard and mouse

#### Dental Direkt CAD-Module

- DD virtual articulator
- DD Abutment Creator



You will find detailed descriptions of the individual components on the following pages

Art.-no.	Contents	Price (euro/net)
S 102.2	CAD complete set DD Argus M2 HD, 3D-Designer Basis by exocad®, 2 CAD modules, PC + 1-day training + 1 year CAD support hotline per TeamViewer	17.490,00

# DDArgusM2HD

## Optical 3D-HD Scanner

DD Argus M2 HD light stripe scanner is the perfect allrounder for your laboratory and leaves nothing to be desired. Thanks to the tried and tested Stable Scan Stage Method (SSS), which allows for a pivot of 0° – 90° across the model, elaborate model fixation is no longer necessary. Quick and easy operation guarantees the shortest scan times.



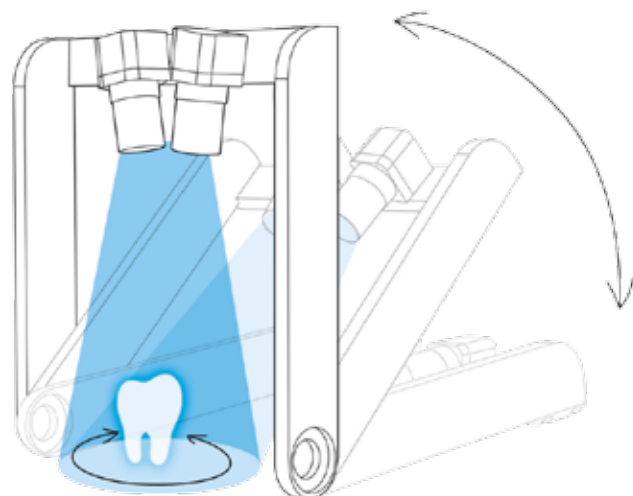
Technical data
Free data interface (.stl)
Multi die function
2 x 2.0 MP-HD camera
Accuracy: <10 µm
Voltage: 110 – 240 V
Performance: 110 – 240 V, 50 – 60 Hz
Weight: 17 kg
Dimensions (W x H x D): 330 x 495 x 430 mm

Scan time	
Detailed scan	50 Sek.
Overview scan	27 Sek.
Mandible/maxilla model	50 Sek.
Vestibular	12 Sek.
Multi die scan	47 Sek.

### Stable Scan Stage (SSS) Method®

Complex model fixation was yesterday

- SSS-method allows for pivot of 0 – 90° across the model
- Gripping model plate
- No additional tilting movement required
- No shifting or dropping of models
- Scanning of non-perforated surfaces
- Problem-free gingiva, scan body, wax-up and Situation model scans possible



## DD Argus mini system

Our DD Argus mini system, consisting of the DD Argus mini scanner and the 3D-Designer by exocad® software, is the ideal complete entry level solution, or suitable for an additional solution, and convinces with an attractive price – performance relationship. The price for the system includes our CAD support hotline for one year.

- Open and reliable
- Excellent precision (< 10 µm)
- Cost-effective, modular complete solution
- Perfect for novices, or as secondary device
- Including 1 year support



### Scope of delivery

#### DD Argus Mini Scanner

- 2 distance plates
- 1 calibration unit
- 1 multi-die adapter
- 1 articulator plate
- 1 scan plate
- 1 model fixator

#### Dental Direkt Designer BASIS by exocad®

The basic software has an immense range of functions at its command, including automatic preparation limits recognition.

#### PC

High performance PC with Intel Core i5, Windows 10 Pro 64-Bit, 24" FullHD monitor, keyboard and mouse



You will find detailed descriptions of the individual components on the following pages

Art.-no.	Contents	Price (euro/net)
S 102.3	CAD complete set DD Argus mini, 3D-Designer Basis by exocad®, PC + 1-day training + 1 year CAD support hotline per TeamViewer	11.990,00

# DDArgusmini

## 3D Dental Scanner small construction – big performance

The DD Argus mini is the perfect companion for your dental laboratory. The compact, L-shaped design fits any work surface. The two 1.3 megapixel cameras a the fast USB 3.0 interface guarantees the best resolution and accelerated work processes. The open system guarantees greatest freedom and flexibility.



### Technical data

Free data interface (.stl)

Multi die function

2 x 1.3 MP camera

Accuracy: <math><10 \mu\text{m}</math>

Voltage: 110 – 240 V

Performance: 110 – 240 V, 50 – 60 Hz

Weight: 14 kg

Dimensions (W x H x D): 330 x 330 x 330 mm

### Scan time

Detailed scan 55 Sek.

Overview scan 30 Sek.

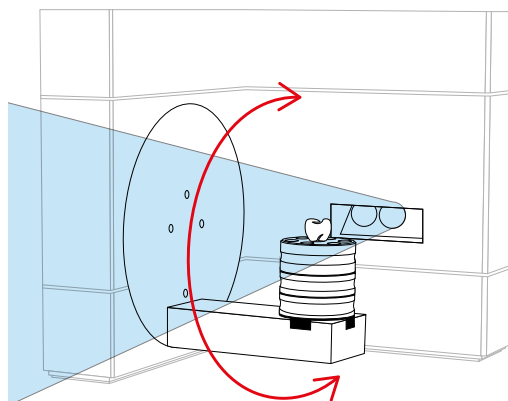
Mandible/maxilla model 70 Sek.

Vestibular 12 Sek.

Multi die scan 55 Sek.

### Model Swing Method

- No shifting or dropping of models
- Scanning of non-perforated surfaces
- Problem-free gingiva, scan body, wax-up and Situation model scans possible





Technical data	<b>T500 by MEDIT</b>								
Scan method	Optical phase shifting								
Accuracy	< 7 µm								
Optical detection	2 x 2,0 MP HD-cameras								
Model fixation	different plates								
Use of multi-die-plate	possible								
USB	3.0								
Dat format	open (.stl)								
Light source, -technology	LED, blue stripe light projection								
Scan time	<table border="0"> <tr> <td>Single-die</td> <td>16 dies in 19 Sec.</td> </tr> <tr> <td>Three-arch bridges</td> <td>31 Sec.</td> </tr> <tr> <td>14-arch bridges</td> <td>31 Sec.</td> </tr> <tr> <td>Full arch</td> <td>12 Sec.</td> </tr> </table>	Single-die	16 dies in 19 Sec.	Three-arch bridges	31 Sec.	14-arch bridges	31 Sec.	Full arch	12 Sec.
Single-die	16 dies in 19 Sec.								
Three-arch bridges	31 Sec.								
14-arch bridges	31 Sec.								
Full arch	12 Sec.								
Dimensions	290 x 290 x 340 mm (W x H x D)								
Weight	12 kg								
Voltage	100 – 240V, 50 – 60 Hz								
Software	incl. 3D Designer by exocad® incl. modul „Abutment Creator“ incl. modul „Virtual Articulator“								
Hardware	<ul style="list-style-type: none"> <li>- 1 x Core i7 7700 / 3.6 GHz – 4.2 GHz</li> <li>- RAM 2 x 16 GB</li> <li>- SSD 512 GB + 1 TB HDD 7200 rpm</li> <li>- GF GTX 1050 Ti with 2 GB / HD Graphics 630</li> <li>- Win 10 Pro 64-Bit</li> <li>- 58,4 cm (24") Full HD flatscreen</li> <li>- Keyboard and mouse</li> </ul>								
Accessories	<ul style="list-style-type: none"> <li>1 flexible multi-die plate</li> <li>1 calibration panel</li> <li>1 screw base jig</li> <li>1 multi-die jig</li> <li>1 Gum-base jig</li> </ul>								
Service	Including training and instruction in our Technology Center in 49326 Melle 12 month inclusive								
Updates	12 month after activation inclusive								
Price (euro/net)	17.490,00								





validated  
for implant  
bases

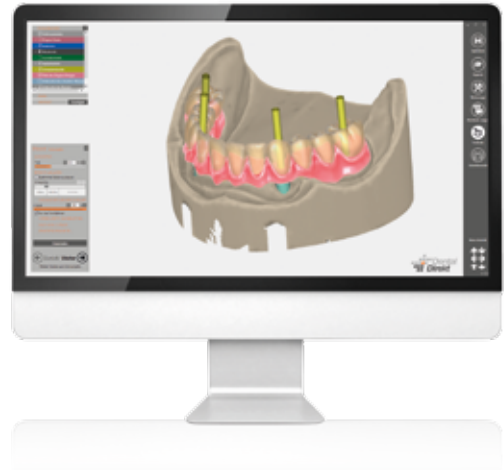


<b>DDArgus M2 UHD</b>	<b>DDArgus M2 HD</b>	<b>DDArgus mini</b>
Stable-Scan-Stage-Method (SSS)	Stable-Scan-Stage-Method (SSS)	Model-Swing-Method
< 5 µm	< 10 µm	< 10 µm
2 x 5,0 MP UHD-cameras	2 x 2,0 MP HD-cameras	2 x 1,3 MP cameras
not necessary	not necessary	necessary
possible	possible	possible
3.0	3.0	3.0
open (.stl)	open (.stl)	open (.stl)
LED, white structured light	LED, white structured light	LED, white structured light
Detail scan 50 Sec. Overview scan 27 Sec. Upper & lower jaw 50 Sec. Vestibular 12 Sec. Multi-die-scan 47 Sec.	Detail scan 50 Sec. Overview scan 27 Sec. Upper & lower jaw 50 Sec. Vestibular 12 Sec. Multi-die-scan 47 Sec.	Detail scan 55 Sec. Overview scan 30 Sec. Upper & lower jaw 70 Sec. Vestibular 12 Sec. Multi-die-scan 55 Sec.
330 x 495 x 430 mm (W x H x D)	330 x 495 x 430 mm (W x H x D)	330 x 330 x 330 mm (W x H x D)
17 kg	17 kg	14 kg
110 – 240 V, 50 – 60 Hz	110 – 240 V, 50 Hz	110 – 240 V, 50 – 60 Hz
incl. 3D Designer by exocad® incl. modul „Abutment Creator“ incl. modul „Virtual Articulator“	incl. 3D Designer by exocad® incl. modul „Abutment Creator“ incl. modul „Virtual Articulator“	incl. 3D Designer by exocad®
- 1 x Core i7 7700 / 3.6 GHz – 4.2 GHz - RAM 2 x 16 GB - SSD 512 GB + 1 TB HDD 7200 rpm - GF GTX 1050 Ti with 2 GB / HD Graphics 630 - Win 10 Pro 64-Bit - 58,4 cm (24") Full HD flatscreen - Keyboard and mouse	- 1 x Core i7 7700 / 3.6 GHz – 4.2 GHz - RAM 2 x 16 GB - SSD 512 GB + 1 TB HDD 7200 rpm - GF GTX 1050 Ti with 2 GB / HD Graphics 630 - Win 10 Pro 64-Bit - 58,4 cm (24") Full HD flatscreen - Keyboard and mouse	- 1 x Core i7 7700 / 3.6 GHz – 4.2 GHz - RAM 2 x 16 GB - SSD 512 GB + 1 TB HDD 7200 rpm - GF GTX 1050 Ti with 2 GB / HD Graphics 630 - Win 10 Pro 64-Bit - 58,4 cm (24") Full HD flatscreen - Keyboard and mouse
2 x Distance plate 1 x Calibration unit 1 x Multi-die-adapter 2 x Anti-slip-underlay 1 x Splitcastcomb. Artex/Adesso or SAM/Protar all necessary cabling	2 x Distance plate 1 x Calibration unit 1 x Multi-die-adapter 2 x Anti-slip-underlay 1 x Splitcastkomb. Artex/Adesso or SAM/Protar all necessary cabling	2 x Distance plate 1 x Calibration unit 1 x Multi-die-adapter 1 x Articulator plate 1 x Scan plate 1 x Model fixator Fixing material all necessary cabling
Including training and instruction in our Technology Center in 49326 Melle	Including training and instruction in our Technology Center in 49326 Melle	Including training and instruction in our Technology Center in 49326 Melle
12 month inclusive	12 month inclusive	12 month inclusive
12 month after activation inclusive	12 month after activation inclusive	12 month after activation inclusive
21.990,00	17.490,00	11.990,00

## Dental Direkt Designer by exocad®

A whole laboratory in one software – open for your creativity

The design software Dental Direkt Designer by exocad® is the heart of the system. You create your dental models at the highest level and are herein supported in your work by the intuitive user interface. Safe preparation lines recognition and an automatic bridge design with joint configuration increase the efficiency of your working method. It is thus the perfect solution for CAD novices and advanced users alike. Even the basic version offers you an immense range of functions covering the majority of dental technical applications. Of course you can produce your construction in all commonly used materials.

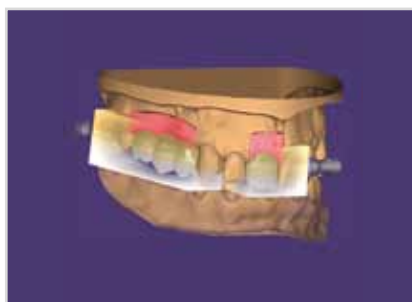


### Indication of the basic software

- Inlays, onlays and veneers
- Wax-ups
- Primary telescopes
- Reduced crowns and bridges
- Copings and bridge frameworks of any span
- Fully anatomical crowns and bridges

### Advantages Dental CAD 2.2 Valletta

- Dentalshare webview with authentic 3D-preview-links
- Quick sectional view with new measuring functions
- Highly improved coloring texture of intraoral scans
- Numerous improvements in terms of handling and power
- Free choice of the guidance face in the articulator movement
- Improved adaption on approximal contacts



## CAD Modules – more than just options

Open for perfect data quality. Complete your 3D Designer® with CAD modules and use all capabilities to maximise your value-creation.

### DD Virtual Articulator

The DD virtual articulator allows simultaneous construction in upper jaw and lower jaw, integrating Artex®, Adesso Split®- or SAM® synchronisation systems. The integration of all patient values relevant to joints and cranium respectively is thus possible at construction. The finished bridge frameworks are dynamically reduced and require no post processing.

Art.-no.	Price (euro/net)
S 105.1	700,00



### DD Abutment Creator

For quicker and better creation of individual abutments. Create an individual emergence profile, system-dependent with or without adhesive bases. Current implant system are already included in the abutment library, such as e.g. Astra Tech®, Nobel Biocare®, Straumann®, Zimmer®, Dentsply Friadent® and Biomet®.

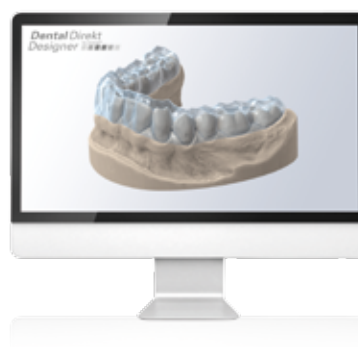
Art.-no.	Price (euro/net)
S 104.1	1.200,00



### DD Bite Splint

Creates in few work steps virtual therapeutic splints. Additional use of the DD virtual articulator module permits utilisation of the full spectrum.

Art.-no.	Price (euro/net)
S 115.1	1.600,00



### DD Bridge module

The DD Bridge module offers you an extensive profile selection. Create Dolder, Hader, Canada and hybrid bridges, as well as individual profiles as stump, abutment, or occlusally screwed bridging works.

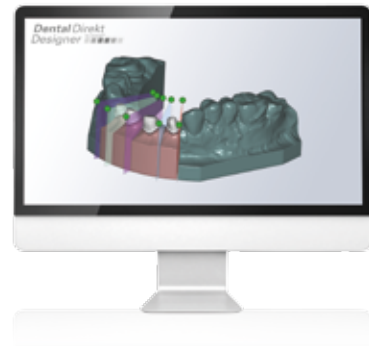
Art.-no.	Price (euro/net)
S 107.1	1.600,00



## DD Model Creator

With the add-on module for models you create physical working models on the basis of scan data. Intraoral scans, or scan data from imprint scanners serve here as input data. The add-on module supports the creation of saw-cut models, as well as the creation of models that only allow for the removal of prepared tooth stumps.

Art.-no.	Price (euro/net)
S 116.1	2.000,00



## DD Provisorium

With this add-on module, you create individual temporary crowns and bridges using the “eggshell” technique. Based on a scan of the pre-operative situation, you can create the shape of the temporary crown or bridge by copying the original anatomy, or alternatively revert to a tooth library.

Art.-no.	Price (euro/net)
S 117.1	590,00



## DD Tooth Library

For those who want even more choice, the extensive library of natural teeth is just the right thing. The library includes 61 upper jaw anterior teeth and 19 lower jaw anterior, upper jaw posterior and lower jaw posterior sets respectively.

Art.-no.	Price (euro/net)
S 121.1	500,00



## DD TruSmile

Offers near-photorealistic renderings in real time, already during the design process. DD TruSmile is a high performance aesthetics module that permits the creation of natural tooth replacement constructions on screen. This makes the patient’s decision regarding choice of material easier.

Art.-no.	Price (euro/net)
S 109.1	600,00



## DD DICOM Viewer

This module includes an integrated DICOM viewer, which allows you to visualise Voxel data from CT machines already during the design process.

Art.-no.	Price (euro/net)
S 114.1	500,00

## Partial Framework

The DD Partial Framework add-on module now facilitates the digital design of model casting works. An on-file library of various clamps, rest seats, saddles etc. ensures a quick and efficient workflow. The module ensures a secure design of transverse bars and their surface, with subsequent option of digital manufacture.

Art.-no.	Price (euro/net)
S 131	1.900,00

## DD Full Dentures

With the Full Denture module, we offer you a digital solution for the design of full dentures. Digital analysis of model data facilitates suggestions for tooth positioning. The final designed dentures can then be shaped or printed.

Art.-no.	Price (euro/net)
S 135	1.900,00

## DD Jaw Motion Import

The Jaw Motion Import module allows you to import jaw movement registration data from external devices such as the JMA system from Zebris. The module works in combination with the Virtual Articulator module.

Art.-no.	Price (euro/net)
S 132	750,00

## Smile Creator

With the Smile Creator module, exocad provides an easy solution for aesthetic planning that leads to more predictable results. Combine patient photos, outlines and 3D situations.

Art.-no.	Price (euro/net)
S 136	1.400,00



# Exoplan by exocad®

## Exceptional flexibility in the digital workflow

Discover the powerful implant planning and surgical guide design software exoplan by exocad® – created to provide dental labs, dentists, implant specialists and surgeons with maximum flexibility. Based on the renowned exocad platform, exoplan guarantees a seamless digital workflow and the highest usability and performance.



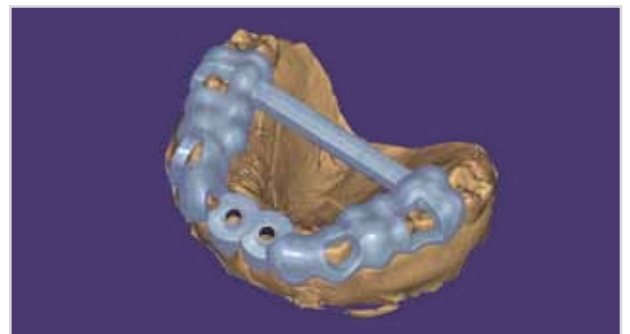
### Advantages

- Open, vendor-neutral software for open 3D scanners, 3D printers or milling machines
- Seamless integration with DD designer by exocad® (facilitates planning and production of implant-supported, temporary and final prostheses)
- With Wizard step-by-step user guide and expert mode with extensive supplementary features and tools
- High speed in processing of large files
- Intuitive and innovative

# Surgical Guide by exocad®

## After implant planning is before designing the surgical guide

In-house surgical guides – with Guide Creator module Design your own surgical guides, and manufacture them in-house with your 3D printer or milling machine to maximize the return on hardware investments. Thanks to the standard data format .stl, you have the freedom to choose your hardware and production center.



### Advantages

- Same technical platform as exocad®
- Seamless transfer with DD designer by exocad®
- Wizard step by step user guide
- User-friendly open software, therefore inhouse production possible
- Comprehensive library of implant systems such as z. Straumann®, Zimmer® etc. and various prosthetic components

## Accessories for T500 by Medit

Complete your 3D scanner with the right accessories and make your workflow even more efficient.



### Calibration panel

Art.-no.	Article	Price (euro/net)
S 310	Calibration panel	500,00

### Gum base jig

Art.-no.	Article	Price (euro/net)
S 311	Gum base jig	200,00

### Screw base jig

Art.-no.	Article	Price (euro/net)
S 312	Screw base jig	200,00

### Multi-die jig

Art.-no.	Article	Price (euro/net)
S 313	Multi-die jig	250,00

### Half block jig

Art.-no.	Article	Price (euro/net)
S 314	Half block jig (2 pcs.)	150,00

### Articulator (interlog jig)

Art.-no.	Article	Price (euro/net)
S 315	Articulator (interlog jig)	200,00

### Articulator plate

Art.-no.	Article	Price (euro/net)
S 316	Articulator plate	200,00

### KAS jig (KaVo, Artex, SAM)

Art.-no.	Article	Price (euro/net)
S 317	KAS jig	250,00

### Flexible Multi-die

Art.-no.	Article	Price (euro/net)
S 318	Flexible Multi-die	400,00

### 3-axis-arm (necessary for impression scans)

Art.-no.	Article	Price (euro/net)
S 319	3-axis-arm	650,00



## Accessories for DD Argus M2 UHD, DD Argus M2 HD and DD Argus mini

Complete your 3D scanner with the right accessories and thus render your workflow even more efficient. These accessories are compatible with DD Argus M2 HD, as well as DD Argus mini.

### Split-cast combinations for joint-oriented acceptance

With the DD Split-cast combinations, a joint-oriented model transfer from common articulator systems is possible.

Art.-no.	Article	Price (euro/net)
CAM 9951	Artex® and Adesso®	450,00
CAM 9952	SAM® and Protar®	450,00
CAM 9953	Type S for Protar®	450,00



### Implant-multi-die-plate

The implant multi die plate is removable and was designed specifically for the scanning of abutments. Using the implant multi die plate, the multi die plate (included in the scope of delivery) is protected from contamination stemming from the use of scan spray.

Art.-no.	Article	Price (euro/net)
S 123	Implant-multi-die-plate	150,00



### All-in-one-plate

This repetitive mounting and scanning process can be burdensome and time-consuming. All-in-one scanning enables you to complete a single or 3-unit bridge case in two simple steps (including the bite scan). It will save almost 50% of the work time.

Art.-no.	Article	Price (euro/net)
S 120	All-in-one-plate	750,00







03.  
LabTec  
Milling Machines

## LabTec ONE

The LabTec ONE is perfect for processing all standard CAD/CAM blocks up to a size of 65 x 40 x 20 mm. Due to the excellent axis kinematics, the machine is also suitable for processing premilled abutments. With the integrated PC and touch display, the LabTec ONE is very user friendly. The 3-fold block holder and six tool positions ensure a cost-effective machining process at highest quality.



CAM inklusive\*



Technical data	Description
<b>Materials</b>	
Materials	Preform Abutments, zirconium oxide, aluminium oxide, PMMA, plastics, composites, wax, glass ceramics, hybrid ceramics
Compatibility	CAD/CAM blocks (1-fold and 3-fold adapter), maxi blocks (65 x 40 x 20 mm), nt-Trading Premilled Abutments, Medentika PreFace® Abutments
<b>Mechanics/Electronics</b>	
Number of axis and processing type	4
Rotary axis travel angle	360° processing possible
Wet processing	Yes
Type of spindle	High frequency spindle
Max. spindle speed	80.000 rpm/min
Axle drive/ spindle motor	Microstep Motors
Tool holder	3 mm shank
Tool changer	6-times
Blank changer/workpiece changer	Manual, 3-times adapter
<b>Connection requirements</b>	
Weight	65 kg
Width x depth x height	380 x 495 x 600 mm
Line voltage/frequency/maximum capacity	100 V – 240 V / 50/60 Hz
Pressure/quantity	2 bar
Suction	iVac eco+

Art.-no.	Price (euro/net)
CAM 0916	23.950,00

\*by imes-icore



## LabTec 25 Pro Loader

The compact 5-axis milling machine opens up a completely new machine segment. The LabTec 25 Pro Loader offers automation and 5-axis simultaneous processing of blanks and blocks. While requiring only minimum space the machine convinces at an attractive price-performance ratio. The milling system has a fully-automatic 10-times tool changer with 3 mm milling tools as well as an integrated touch screen monitor. With the monitor, the machine can be intuitively operated with the latest generation of SmartControl control software. The fully automatic 6-fold blank changer enables precise machining of all common applications in the dental industry.



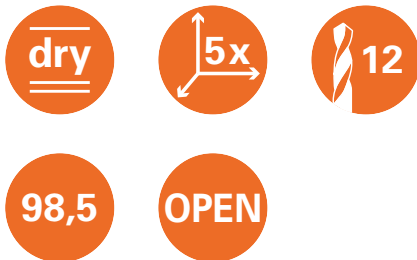
Technical data	Description
<b>Materials</b>	
Materials	Zirconium oxide, aluminium oxide, PMMA, plastics, composites, wax, glass ceramics, hybrid ceramics, titanium
Compatibility	98 mm/ 98,5 mm blanks, CAD/CAM blocks (3-times adapter), Lava® frames, nt-Trading Premilled Abutments, Medentika PreFace® Abutments, DD Prefabs
<b>Mechanics/Electronics</b>	
Number of axis and processing type	5-axis simultaneous processing
Rotary axis travel angle	A-Achse +/- 30° / B-Achse +/- 25°
Wet processing	Yes
Type of spindle	High frequency spindle
Max. spindle speed	100.000 rpm/0,75 kW
Axle drive/ spindle motor	Microstep motors
Tool holder	3 mm shank
Tool changer	10-times
Blank changer/workpiece changer	Fully automatic, 6-times (6 blank holders included)
<b>Anschlussvoraussetzungen</b>	
Weight	115 kg
Width x depth x height	780 x 710 x 604 mm
Line voltage/frequency/maximum capacity	100 V – 240 V / 50/60 Hz / 900 W
Pressure/quantity	6 – 9 bar bar constant supply, 50 litre/minute
Suction	iVAC eco+

Art.-no.	Price (euro/net)
CAM 920.2	34.950,00

# LabTec Milling Machines

## LabTec 25 dry

The new LabTec25 dry is a compact 5-axis milling machine for dry processing. With a simple connection to the CAM software, easiest tool management and disk fitting, you will realise an excellent result in no time. Use the LabTec25 dry to work all commonly used materials, such as zirconium- and aluminium oxide, PMMA, composite and wax in dry processing.

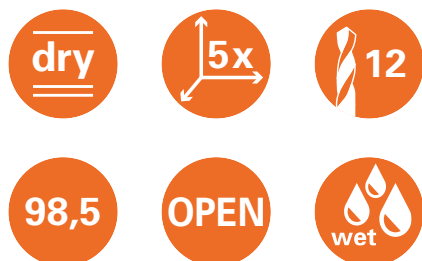


Technical data	Description
<b>Materials</b>	
Materials	Zirconium oxide, aluminium oxide, PMMA, plastics, composite, wax
Compatibility	98 mm/ 98,5 mm blanks, CAD/CAM blocks (3-times adapter), Lava® frames
<b>Mechanics/Electronics</b>	
Number of axis and processing type	5-axis simultaneous processing
Rotary axis travel angle	A-axis +/- 30° / B-axis +/- 25°
Wet processing	No
Type of spindle	High frequency spindle
Max. spindle speed	60,000 rpm/0,4 kW
Axle drive/ spindle motor	Microstep motors
Tool holder	3 mm shank
Tool changer	12-times
Blank changer/workpiece changer	Manual
<b>Connection requirements</b>	
Weight	95 kg
Width x depth x height	544 x 650 x 612 mm
Line voltage/frequency/maximum capacity	100 V-240 V / 50/60 Hz / 900 W
Pressure/quantity	6 – 9 bar constant supply, only 50 Litre/minute
Suction	iVAC eco+

Art.-no.	Price (euro/net)
CAM 920.1	22.950,00

## LabTec 25 wet

The new LabTec25 wet is a compact 5-axis milling machine for wet and dry processing. With a simple connection to the CAM software, easiest tool management and disk fitting, you will realise an excellent result in no time. As with the LabTec25 dry, you will work all commonly used materials, such as zirconium- and aluminium oxide, PMMA, composite and wax. Furthermore, wet processing allows you to machine glass- and hybrid ceramics and preform abutments.

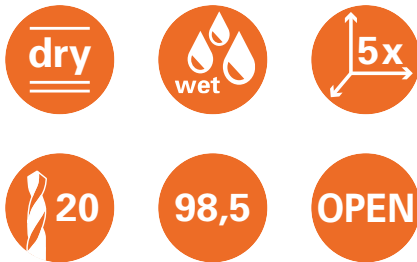


Technical data	Description
<b>Materials</b>	
Materials	Zirconium oxide, aluminium oxide, PMMA, plastics, composites, wax, glass ceramics, hybrid ceramics, titanium
Compatibility	98 mm/ 98,5 mm blanks, CAD/CAM blocks (3-times adapter), Lava® frames, nt-Trading Premilled Abutments, Medentika PreFace® Abutments, DD Prefabs
<b>Mechanics/Electronics</b>	
Number of axis and processing type	5-axis simultaneous processing
Rotary axis travel angle	A-axis +/- 30° / B-axis +/- 25°
Wet processing	Yes
Type of spindle	High frequency spindle
Max. spindle speed	60,000 rpm/0,4 kW
Axle drive/ spindle motor	Microstep motors
Tool holder	3 mm shank
Tool changer	12-times
Blank changer/workpiece changer	Manual
<b>Connection requirements</b>	
Weight	95 kg
Width x depth x height	544 x 650 x 612 mm
Line voltage/frequency/maximum capacity	100 V – 240 V / 50/60 Hz / 900 W
Pressure/quantity	6 – 9 bar constant supply, only 50 Litre/minute
Suction	iVAC eco+

Art.-no.	Price (euro/net)
CAM 920	26.950,00

## LabTec 35

The LabTec35 is a 5-axis milling machine that meets all modern requirements for CAD/CAM processing. Hard materials, such as CoCr and titanium can also be processed with ease. You can optionally fit LabTec35 with a zero-point clamping system. This facilitates the use of various adapter systems (e.g. abutments, blocks etc.). Information regarding the zero-point system can be found under accessories.



Technical data	Description
<b>Materials</b>	
Materials	CoCr/CoCr-alloys, titanium, zirconium oxide, aluminium oxide, PMMA, plastics, composites, wax, glass ceramics, hybrid ceramics
Compatibility	98/98,5 mm with step, CAD/CAM blocks, nt-Trading pre-milled abutments, Medentika PreFace® abutments, Lava® frames, DD Prefabs
<b>Mechanics/Electronics</b>	
Number of axis and processing type	5-axis simultaneous machining
Rotary axis travel angle	A-axis +/- 30° / B-axis +/- 25°
Wet processing	Integrated
Type of spindle	High frequency spindle
Max. spindle speed	60,000 rpm/min/1 kW
Axle drive/ spindle motor	Servomotors with encoder resolution 0,5 µm
Tool holder	6 mm shank
Tool changer	20-times integrated with chip cover
Blank changer/workpiece changer	Manual
Zero-point clamping system	Optional
<b>Connection requirements</b>	
Weight	180 kg
Width x depth x height	758 x 790 x 857 mm
Line voltage/frequency/maximum capacity	100 V-240 V / 50-60 Hz / 2200 Watt
Pressure/quantity	6 – 9 bar constant supply, 60 litre/minute
Suction	iVAC eco+
<b>Art.-no.</b>	
CAM 0912	Price (euro/net) 39.950,00

## LabTec35 Loader

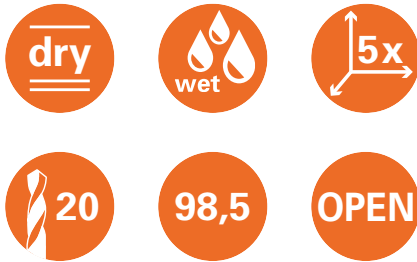
The LabTec35 Loader is the allrounder milling machine system that meets all modern requirements for CAD/CAM processing. Processing of all relevant disk materials, such as CoCr, titanium, zirconium oxide, plastics, blocks and future materials on a single machine is thus possible. The LabTec35 Loader already has an integrated zero-point clamping system at its disposal, which makes the use of a variety of adapter systems possible. The integrated tool changer allows for up to 12 blanks to be fitted, which are changed and processed automatically, without supervision.



Technical data	Description
<b>Materials</b>	
Materials	CoCr/CoCr-alloys, titanium, zirconium oxide, aluminium oxide, PMMA, plastics, composites, wax, glass ceramics, hybrid ceramics
Compatibility	98/98,5 mm with step, CAD/CAM blocks, nt-Trading pre-milled abutments, Medentika PreFace® abutments, Lava® frames, DD Prefabs
<b>Mechanics/Electronics</b>	
Number of axis and processing type	5-axis simultaneous machining
Rotary axis travel angle	A-axis +/- 30° / B-axis +/- 25°
Wet processing	Integrated
Type of spindle	High frequency spindle
Max. spindle speed	60,000 rpm/min / 1 kW
Axle drive/ spindle motor	Servomotors with encoder resolution 0,5 µm
Tool holder	6 mm shank
Tool changer	20-times integrated with chip cover
Blank changer/workpiece changer	Fully automatic (6 blank holders included, expandable up to 12-times)
Zero-point clamping system	Integrated
<b>Connection requirements</b>	
Weight	225 kg
Width x depth x height	1058 x 790 x 857 mm
Line voltage/frequency/maximum capacity	100 V-240 V / 50-60 Hz / 2200 Watt
Pressure/quantity	6 – 9 bar constant supply, 60 litre/minute
Suction	iVAC eco+
<b>Art.-no.</b>	
CAM 0912.1	Price (euro/net) 49.950,00

## LabTec 35 Pro

The Labtec35Pro is a compact high-end milling machine solution. The new machine concept with a body structure made of polymer concrete provides maximum stability for vibration-free machining. The high-resolution dynamic servomotors with absolute measuring systems allow up to 20% faster machining with optimum precision. The Labtec35Pro is therefore suitable for the highest demands of the dental lab or milling center combined with a very compact design. With the Labtec35Pro all dental CAD/CAM materials can be processed.



Technical data	Description
<b>Materials</b>	
Materials	CoCr/CoCr-alloys, titanium, zirconium oxide, aluminium oxide, PMMA, plastics, composites, wax, glass ceramics, hybrid ceramics
Compatibility	98/98,5 mm with step, CAD/CAM blocks, nt-Trading pre-milled abutments, Medentika PreFace® abutments, Lava® frames, DD Prefabs
<b>Mechanics/Electronics</b>	
Number of axis and processing type	5
Rotary axis travel angle	A-axis +/- 30° / B-axis +/- 25°
Wet processing	Yes
Type of spindle	High frequency spindle
Max. spindle speed	60.000 rpm/min / 1 kW
Axle drive/ spindle motor	Servomotor with absolut encoder 0,5 µm
Tool holder	6 mm shank
Tool changer	20-times
Blank changer/workpiece changer	Manual
Zero-point clamping system	Optional
<b>Connection requirements</b>	
Weight	250 kg
Width x depth x hight	758 x 790 x 857 mm
Line voltage/frequency/maximum capacity	100 V-240 V / 50/60 Hz
Pressure/quantity	6 – 9 bar constant supply, 60 litre/minute
Suction	iVAC eco+
<b>Art.-no.</b>	
CAM 0912.6	Price (euro/net) 49.950,00



## LabTec 35 Pro Loader

The LabTec 35 Pro is a compact high-end milling machine solution with an advanced automation unit. The new machine concept with a body structure made of polymer concrete provides maximum stability for vibration-free machining. The high-resolution dynamic servomotors with absolute measuring systems allow up to 20% faster machining with optimum precision. The LabTec 35 Pro is therefore suitable for the highest demands of the dental lab or milling center combined with a very compact design. With the LabTec 35 Pro all dental CAD/CAM materials can be processed.



Technical data	Description
<b>Materials</b>	
Materials	CoCr/CoCr-alloys, titanium, zirconium oxide, aluminium oxide, PMMA, plastics, composites, wax, glass ceramics, hybrid ceramics
Compatibility	98/98,5 mm with step, CAD/CAM blocks, nt-Trading pre-milled abutments, Medentika PreFace® abutments, Lava® frames, DD Prefabs
<b>Mechanics/Electronics</b>	
Number of axis and processing type	5
Rotary axis travel angle	A-axis +/- 30° / B-axis +/- 25°
Wet processing	Yes
Type of spindle	High frequency spindle
Max. spindle speed	60.000 U/min/1 kW
Axle drive/ spindle motor	Servomotor with absolut encoder 0,5 µm
Tool holder	6 mm shank
Tool changer	20-times
Blank changer/workpiece changer	Fully automatic (8 blank holders included, expandable up to 12-times)
Zero-point clamping system	Integrated
<b>Connection requirements</b>	
Weight	250 kg
Width x depth x hight	1058 x 790 x 857 mm
Line voltage/frequency/maximum capacity	100 V-240 V / 50/60 Hz
Pressure/quantity	6 – 9 bar constant supply, 60 litre/minute
Suction	iVAC eco+
<b>Art.-no.</b>	
CAM 0912.7	Price (euro/net) 59.950,00





04.  
CAM Software

## DD smartCAM 2.0

powered by worknc DENTAL

DD smartCAM 2.0 by worknc Dental is an open and innovative CAM solution for beginners and advanced users. The open CAM system is perfectly optimized for our DD LabTec (i.mes-i.core) milling machines. The fully automated functions save time while also providing precise and reliable results. With DD smartCAM 2.0 you can process all materials with elaborated and well-proven machining strategies.

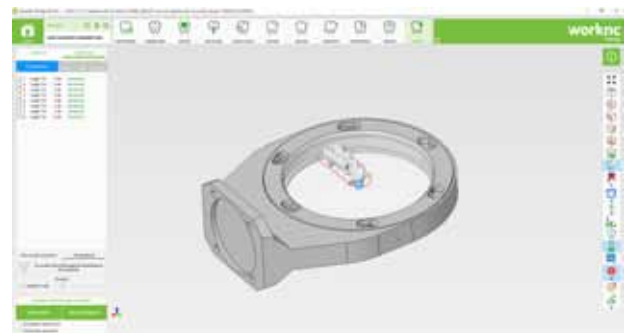


## Specifications

- Collision control for machine- and clamping system
- Automatic generation of preparation margins
- Engraving for the identification of the elements
- Various import options
- Automatic nesting
- And much more...

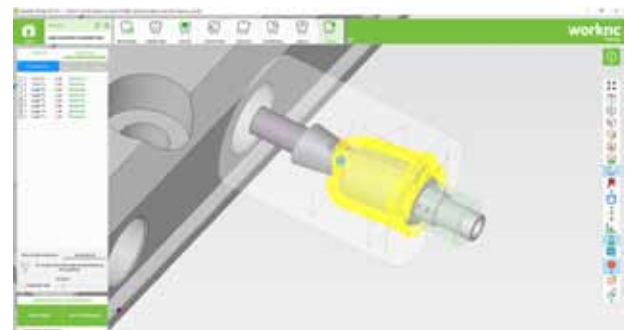
## DD smartCAM 2.0 Xpert 5x

The high-end version of the CAM systems for automatic 3 + 2-axis or 5-axis simultaneous machining with fully automatic undercut machining. During a milling path machining angles can be varied.



## DD smartCAM 2.0 Abutment

The special version enables the high-precision production of individual abutments, in particular DD SolidConnect® Prefab blanks. The performance package is part of the „Xpert 5x SOFT / HARD“ version for LabTec 35 machines - but can also be used as a special solution („stand alone“) for other machine systems.





Functionality	DD smartCAM 2.0 Abutment Stand Alone	DD smartCAM 2.0 Xpert SOFT for LabTec 25	DD smartCAM 2.0 Xpert SOFT/HARD for LabTec 35
Price (euro/net)	1.990,00	4.580,00	8.390,00
Abutment 4 Axis (DD SolidConnect®)	✓	–	–
Xpert 5 Axis	–	✓	✓
Options / modules	✓	–	–
Glass-ceramics wet grinding mode	✓	✓	✓
Metal milling	✓	1.290,00	✓
Prefabs – DD SolidConnect® & more	✓	1.990,00	✓
Implant Designer – standard implant library	✓	✓	✓
Implant Designer	–	1.290,00	1.290,00
Additional DD LabTec machine connection	1.290,00	1.290,00	1.290,00
Machine connection for:	1.590,00	–	–
VHF manufacture, Willemin Macodel, Datron, Dental Concept System, KaVo, MB Maschinen, Yenadent, etc (Machine Types of the manufactures and more on request.)		–	–

## Materials

### DD smartCAM 2.0 Xpert SOFT

Ideal for all applications on LabTec 25 machines: zircon, PEEK, polymer and high performance plastics, wax, glass feldspar hybrid ceramic composites, nano composites.

### DD smartCAM 2.0 Xpert SOFT/HARD

Ideal for all applications on Lab TEC 35 machines:  
Additional machining of titanium, CoCr or gold.







05.  
CAM Accessories

## Accessories for LabTec milling machines

### Additional blank holder for workpiece changer

To ensure complete flexibility, you can extend your workpiece changer with a certain number of blank holders (depending on the machine), which can be then effortlessly fixed in the changer.

Art.-no.	Article	Price (euro/net)
CAM 0912.2	Additional blank holder	619,00

► For LabTec 35 Loader and 35 Pro Loader

Art.-no.	Article	Price (euro/net)
CAM 0912.4	Additional blank holder	675,00

► For LabTec 35 and 35 Pro

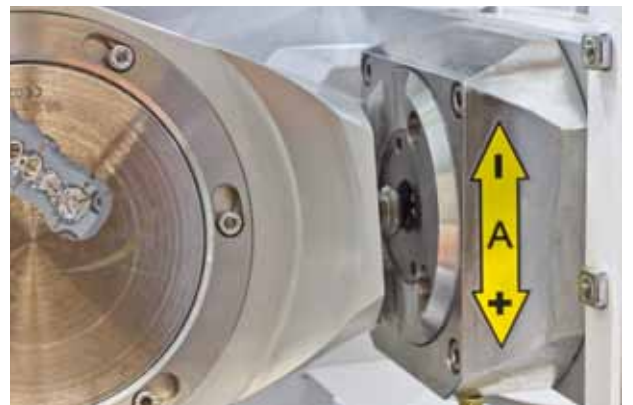


### Zero-point clamping system

The zero-point clamping system enables you to change blanks together with the blank holders at the touch of a button. Clamping of blanks can thus be done outside the machine, e.g. while the machine is processing another blank. In addition, the zero-point clamping system facilitates the use of different adapter systems.

Art.-no.	Article	Price (euro/net)
CAM 0912.3	Zero-point clamping system	1.950,00

► For LabTec 35



### Machine bench

The machine bench was created especially for the requirements of CAM machines. It convinces through its appealing appearance, a sturdy design and plenty of bench space. To give you maximum positioning flexibility, the machine bench is fitted with wheels. The built-in cabinet allows you to integrate your extractor, which reduces noise levels.

Dimensions: 1065 x 790 x 930 mm (W x D x H)

Art.-no.	Article	Price (euro/net)
CAM Tisch 350i DD	Machine table	1.790,00
CAM Tisch 350i DD.1	Extension table (foldable)	249,00

► For LabTec 25, 25 Pro Loader, 35 und 35 Pro

► For Lab Tec 35 Loader and Pro Loader with extension table



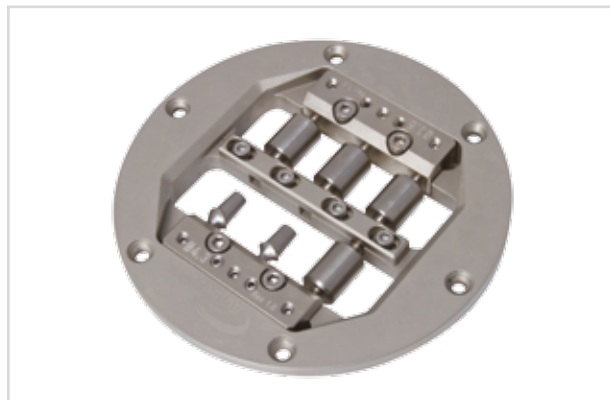


## NT-Preform adapter

Starter kit NT-Preform with six preform abutments and all required accessories.

Art.-no.	Article	Price (euro/net)
CAM 0502	3 mm shank	1.950,00
CAM 0503	6 mm shank	1.950,00

- ▶ For LabTec 25, 25 Pro Loader, 35, 35 Loader, 35 Pro and 35 Pro Loader



## Medentika Preface Adapter

Starter-Kit Medentika® Preface with six preface abutments and all required accessories.

Art.-no.	Article	Price (euro/net)
CAM 0504	Preface Adapter	1.980,00

- ▶ For LabTec 25, 25 Pro Loader, 35, 35 Loader, 35 Pro and 35 Pro Loader



## DD Prefab starter kit (DD SolidConnect®)

Starter kit Dental Direkt Prefabs with six Preface Abutments and all required accessories.

Art.-no.	Article	Price (euro/net)
CAM 0511	DD Prefab starter kit	790,00*

- ▶ For LabTec 25, 25 Pro Loader, 35, 35 Loader, 35 Pro and 35 Pro Loader – other systems on request



## Glass ceramics holder

The glass ceramics holder, incl. accessories, which allows for the machining of blocks, is also suitable for retrofit. Incl. Milling strategy package in iCAM V4 and iCAM V5, as well as graphic integration into the CAM software.

Art.-no.	Article	Price (euro/net)
CAM 0500	Glass ceramics holder	980,00

- ▶ For LabTec 25, 25 Pro Loader, 35, 35 Loader, 35 Pro and 35 Pro Loader



\*Depending on the CAM software, additional costs may be charged for implementation, calibration and activation.

## iVAC eco+

The iVAC eco+ is the little sibling of the iCompVAC. It only differs in that it has no integrated compressor. Owing to the brushless turbine, this high performance extractor system is very compact and low-noise. Particulate matter is hereby directed into a specially designed collection bag, which meets the required filtration degree e.g. for zirconium oxide. A downstream HEPA filter prevents leakage of residual particulate matter. The iVAC eco+ can thus be operated directly in the work area without any problems.

Technical data
Volume flow: 260 m <sup>3</sup> /h
Max. performance: 1.200 W
Filter system: HEPA-filter
Filter volume: 25 liter
Dimensions (W x D x H): 440 x 460 x 750 mm
Weight: 30 kg
Voltage: 115 V/230 V
Noise level: 65 db(A)
Suitable for machine bench



Art.-no.	Price (euro/net)
CAM ECO 230V	1.980,00

## SILENT Compact CAM

The SILENT compact is a small suction system for a single workplace. Due to bagless ultra-fine filter technology incl. mechanical filter cleaning, you avoid inconvenient changing of bags. Its intelligent automatic switchon turns the extraction system into a real relief for your daily routine. Thanks to a fully encapsulated commutator motor, the noise level remains very low.

Technical data
Volume flow: 160 m <sup>3</sup> /h
Max. performance: 480 W
Filter system: Teflon filter cartridge, automatic cleaning
Filter volume: 8 liter
Dimensions (W x D x H): 245 x 500 x 440 mm
Weight: 13,2 kg
Voltage: 115 V/230 V
Noise level: 56,9 db(A)
Suitable for machine bench



Art.-no.	Price (euro/net)
CAM Silent	1.100,00



06.  
Milling Tools

# Milling Tools

## Milling tools for Labtec and imes-icore® machines

Each CAM machine type and every material require specific milling tools. As the interface between the system and the material to be milled, milling tools' quality is of crucial importance when it comes to realising a high quality result.

## Milling tools – 6,0 mm shank

for use in LabTec machines

order-no.	tool-number (standard)	features	max. material height in mm	Ø in mm	price in euro
universal					
DD526000 0506	T18	not diamond-coated	15,0	0,5	49,00
DD526001 0506	T19	not diamond-coated	15,0	0,5	49,00
milling tools for zirconia/aluminium oxide					
DD526013 1006	T14	diamond-coated	25,0	1,0	79,00
DD526013 2506	T13			2,5	79,00
milling tools for zirconia/PMMA/Wax					
DD526019 0306	T33	not diamond-coated	25,0	0,3	56,00
DD526019 0606	T15	conical, not diamond-coated	25,0	0,6	49,00
DD526012 0606	T32	not diamond-coated	25,0	0,6	58,00
DD526019 1006	T12/T14	not diamond-coated	25,0	1,0	39,00
DD526019 2506	T11/T13	not diamond-coated	25,0	2,5	39,00
milling tools for PMMA/Peek/Wax					
DD526004 1006C	T12	not diamond-coated, single-cutters	25,0	1,0	36,50
DD526004 2506C	T11	not diamond-coated, single-cutters	25,0	2,5	36,50
DD526012 4006	T30	Shaft milling tool, not diamond-coated	30,0	4,0	46,00
milling tools for PMMA/Wax					
DD526012 2006	T35	not diamond-coated	30,0	2,0	59,00
DD526012 3006	T34	not diamond-coated	30,0	3,0	59,00
milling tools for glass ceramic/lithium disilikat					
DD526009 0606	T23	conical, diamond-coated	–	0,6	34,50
DD526009 1006	T22	diamond-coated	–	1,0	34,50
DD526009 2506	T21			2,5	34,50



## Milling tools – 6,0 mm shank

for use in LabTec machines

order-no.	tool-number (standard)	features	max. material height in mm	Ø in mm	price in euro
milling tools for cobalt chrome/titanium					
DD526000 1506	T3/T8	not diamond-coated	15,0	1,5	49,00
DD526001 1506	T17	Shaft milling tool, not diamond-coated	25,0	1,5	49,00
DD526022 1506	T16	not diamond-coated	25,0	1,5	49,00
DD526002 1506	T5/T10	Shaft milling tool, not diamond-coated	15,0	1,5	49,00
DD526003 0606	T20	conical, metal	15,0	0,6	49,00
DD526026 1006	T4/T9	short, metal	15,0	1,0	49,00
DD526026 2006	T2/T7	short, metal	15,0	2,0	39,00
DD526026 3006	T1/T6	short, metal	15,0	3,0	39,00
DD526027 1006	T29	long, metal	16,0 – 20,0	1,0	49,00
DD526027 2006	T27	long, metal	16,0 – 20,0	2,0	39,00
DD526027 3006	T26	long, metal	16,0 – 20,0	3,0	39,00

## Milling Tools

### Milling tools – 3,0 mm shank

for use in LabTec machines

order-no.	tool-number (standard)	features	max. material height in mm	Ø in mm	price in euro
universal					
DD526000 1503	T3/T8/T16	not diamond-coated	15,0	1,5	29,90
DD526001 0503	T19	not diamond-coated	15,0	0,5	39,90
DD526001 1503	T17	Shaft milling tool, not diamond-coated	25,0	1,5	29,90
milling tools for zirconia/aluminium oxide					
DD526013 1003	T14	diamond-coated	25,0	1,0	59,00
DD526013 2503	T13			2,5	59,00
milling tools for zirconia/PMMA/Wax					
DD526012 0603	T32	not diamond-coated	25,0	0,6	52,50
DD526016 0303	T33	conical, not diamond-coated	25,0	0,3	40,00
DD526016 0603	T15			0,6	49,00
DD526016 1003	T12/T14	not diamond-coated	25,0	1,0	23,90
DD526016 2503	T11/T13			2,5	23,90
milling tools for PMMA/Peek/Wax					
DD526004 1003C	T12	single-cutters	25,0	1,0	25,50
DD526004 2503C	T11			2,5	25,50
milling tools for glass ceramic/lithium disilikat					
DD526009 0603	T23	conical, diamond-coated	–	0,6	26,90
DD526009 1003	T22	diamond-coated	–	1,0	24,90
DD526009 2503	T21			2,5	24,90
milling tools for cobalt chrome/titanium					
DD526003 0603	T20	conical, metall	15,0	0,6	49,00
DD526018 1003	T4/T9	metal	15,0	1,0	29,90
DD526018 2003	T2/T7			2,0	29,90
DD526018 3003	T1/T6			3,0	29,90



# 07. Sintering furnaces and firing units



# DD Argus fire speed

User friendly operation, short sintering cycles and low power consumption are combined in this sintering furnace. Up to 40 units and restorations, with up to six elements, can be reliably sintered in one cycle at temperatures of up to 1,530 °C. The specific SiC heating technology thereby guarantees reliable sintering results.

### Furnace for sintering ceramics up to 1,530 °C

Two silicon carbide heating elements are the basis for sintering temperatures of up to 1,530 °C and guarantee that discolorations during sintering are excluded. All components of the combustion chamber are made from ultrapure materials and guarantee a clean environment, as well as very homogeneous temperature distribution. The proven, now significantly extended Autodry system allows for precise drying on the one hand, and supports very rapid and targeted heat-up and cool-down, which considerably reduces sintering times.

### Speed-sintering of individual crowns in 2 hours

In-house developed sinter cycles enable the user to speed-sinter single crowns in approximately 2 hours.



Technical data	
Dimensions (H x W x D)	780 x 383 x 343 mm
Weight	21 kg
Voltage	230 V / 50 to 60 Hz
Max. Power consumption	2 kW
Max. temperature	1,530 °C
Touch screen	7,5" color
Programming languages	Classic
Autodry function	✓
Program continuation after power cut	✓
Casing: Anodised aluminium, white	✓
Heaters SiC: ultrapure heating elements made from SiC (silicon carbide); sintering at high temperatures, no discoloration	✓
Fibre insulation multi-compound: Multilayer insulation system for sintering at high temperatures	✓
Fibre insulation table multi-compound: for sintering at high temperatures	✓
Sintering accessories for sintering on one level	✓
Sintering plate micro-pearls	✓
USB interface: Transfer firing programs (dds)/ transfer image files (jpg)/save quality management files (dfl)	2 x (✓/✓/✓)

Art.-no.	Price (euro/net)
CAM 9963	6.950,00



# DD Argus fire 674

The DD Argus Fire 674 uses the proven SiC heating concept, which is perfectly suited for sintering of zirconia frameworks. Apart from its generous space availability of up to 80 units, distributed over two stackable sintering levels, three silicon carbide heating elements, ensure homogeneous sintering at temperatures up to 1,530°C. The DD Argus Fire 674 is your reliable partner for digital processing.

### Sintering of dental ceramics with a diameter of up to 100 mm

The vibration-free lift of the furnace ensures an optimal closing process for the combustion chamber. The unique Autodry system generates high thermal gradients during heat-up and cool-down phases. This permits reduced sintering times through controlled lift movement. Two stacked sintering platforms each offer a respective capacity of 40 units with a diameter of up to 100 mm. Simple operation via the 7.5" colour touch control panel offers you full control over furnace status.



Technical data	
Dimensions (H x W x D)	780 x 383 x 343 mm
Weight	24 kg
Voltage	230 V/50 to 60 Hz
Max. Power consumption	2 kW
Max. Temperature	1,530 °C
Touch screen	7,5" color
Programming languages	Classic
Autodry function	✓
Program continuation after power cut	✓
Casing: Anodised aluminium, white	✓
Heaters SiC: ultrapure heating elements made from SiC (silicon carbide); sintering at high temperatures, no discoloration	✓
Fibre insulation multi-compound: Multilayer insulation system for sintering at high temperatures	✓
Fibre insulation table multi-compound: for sintering at high temperatures	✓
Sintering accessories for sintering on one level	✓
Sintering plate micro-pearls	✓
USB interface: Transfer firing programs (dds)/ transfer image files (jpg)/save quality management files (dfl)	2 x (✓/✓/✓)

Art.-Nr.	Price (euro/net)
CAM 9962	9.950,00

# VITA SMART.FIRE®

## The efficient and compact firing unit

VITA SMART.FIRE® is a firing unit specifically for crystallization, glaze, stain, and corrective firing of all common chairside materials. Selecting the materials and starting the program are done in just one step. Optimally, customized material-specific programs are already pre-installed for simple firing. Thanks to its compact design, the firing unit can be set up easily and saves space in every practice.



### Advantages

- Intuitive use – material selection and program start in one step
- Organized menu navigation with self-explanatory program symbols
- Pre-installed programs for all common chairside materials
- Convenient use, thanks to its space-saving construction
- Reliable function through long-lasting firing technology
- Durable housing with sealed surfaces

Technical data		
Dimensions (H x W x D)	340 x 230 x 300 mm	
Weight	13 kg	
Chamber diameter	80 mm	
Chamber height	43 mm	
Max. temperature	1050°C	
Power supply	230 Volt AC, 50 Hz or 100/110 Volt AC, 50/60 Hz	
Power consumption	950 W (230 V), max. 1100 W (100 V, 110 V)	
Classification protection class	1	
Housing	6 Design	
Environmental conditions	Use only indoors Ambient temperature 10 °C to 35 °C Relative air humidity 80% RH Max. Height 3800 m. above sea level	
Art.-no.	Contents	Price (euro/net)
CAM 9980	VITA SMART.FIRE (230 V) Components: 1 cable for mains power connection, 1 firing tray, 1 Cooling table, 1 Firing pliers, 1 firing tray round, 1 Fibrous pad firing support round, 2 Platinum pins (1 anterior and 1 posterior pin) 1 VITA SMART.FIRE Control unit, 1 Cable for connecting firing unit and control unit	4.490,00



## VITA SMART.FIRE Accessories

- What?**
- An accessory set integrated in the firing unit for convenient firing
  - Components: firing trays, fibrous pad firing supports, platinum pins, firing pliers and cooling table
- What for?**
- So the practice team always has all of the important items to hand at the firing unit

## VITA Vacuum pump



Technical data	
Dimensions (H x W x D)	220 x 320 x 110 mm
Weight	6,4 kg
Final vacuum	< 960 mbar
Power consumption	max. 200 W
Art.-no.	Price (euro/net)
CAM 9981	835,00

