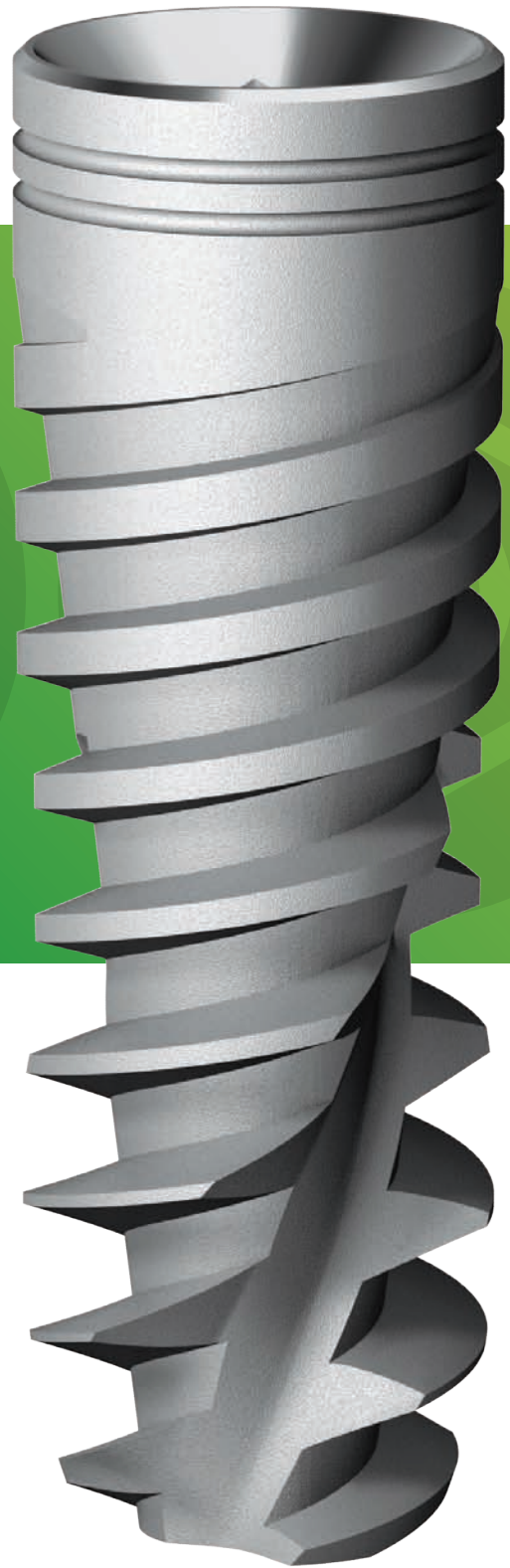


Ⓡ

Implant System



 **AlphaBio**^{TEC}
Simplantology



The Original Spiral Implant



About Alpha-Bio TEC.

For over 25 years Alpha-Bio TEC has been a leader in developing, manufacturing and marketing implants, prosthetics parts, biomaterials and a variety of dental surgical instrumentation.

Alpha-Bio TEC believes in making implantology simple, while manufacturing the highest quality products for the global market and providing customers with the best service possible... Implantology!

Originality and Innovation

After the SPI was launched, the uniquely shaped Spiral Implant was met with suspicion. Today, more than 10 years after, the SPI is the most widely used implant of Alpha-Bio TEC and has become a role model in the implantology market.

The SPI is a tapered internal hex implant with a unique combination of design features that enable easy insertion and very high initial stability. The unique shape of the implant body and its variable thread design (double thread 2x2.4 mm) equip it with some exceptional abilities such as the ability to change direction during placement and a notable success rate.

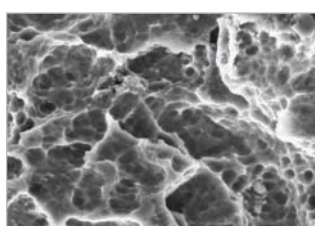


Implant surface process:

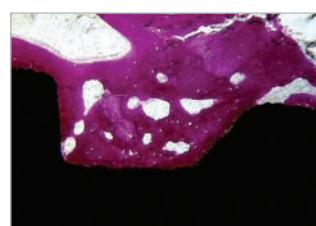
- Sand-blasting to create a macro surface of 20-40 microns
- Double thermal acid etching process to create micro pitting between 1-5 microns

NanoTec advantages:

- Increased early bone-to-implant contact
- Increased stability
- Shorter healing period
- Higher predictability



SEM of surface



Histology after 2 months



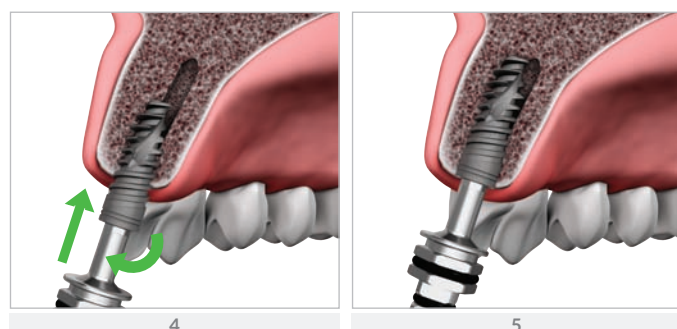
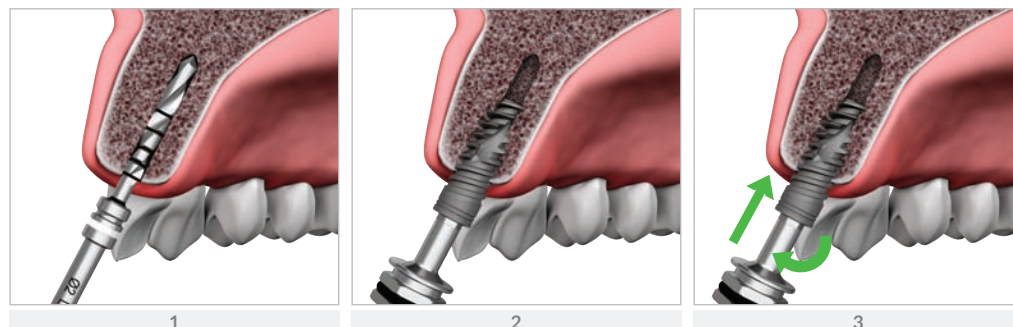
* The number of micro rings may vary between different implant diameters and/or lengths.
 Note: The illustration shows SPI implant Ø3.75 and 13 mm length.

Clinical Advantages

- Bone condensing properties and very high primary stability
- Self-directing during insertion
- Enables the changing of direction for optimal restorative position
- Enables a smaller osteotomy, which results in minimal bone loss and reduced trauma
- Enables narrow ridge expansion
- Reduces the risk of damaging neighboring teeth
- Reduces the risk of perforating the lingual or buccal cortex

Minor Changes in Parallelism

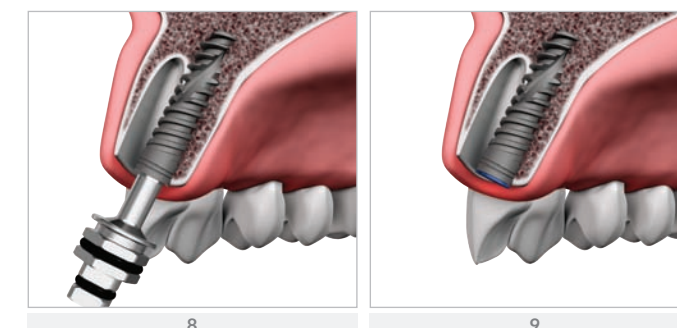
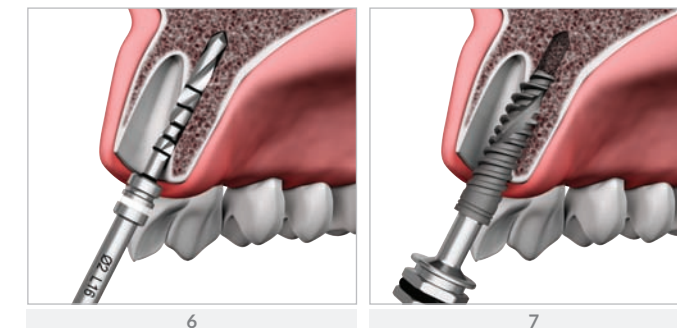
The unique self drilling capability of the SPI implant makes it possible to change the direction of the implant during placement. This helps achieve parallelism between implants and optimize implant placement. Implant redirection is simple - rotate it backwards 2-3 turns and then insert it into the desired position.



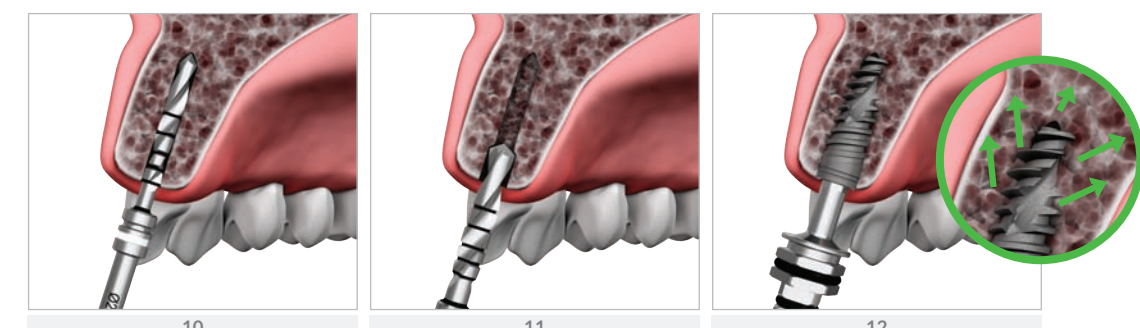
Initial Stability in Soft bone and After Extraction

The implant's ability to achieve very high primary stability in minimal bone space and after extraction, is desirable in most clinical situations. The unique SPI implant core, thread-design and apical part allow it to be anchored and stabilized in very soft bone and after extraction, due to its ability to penetrate prepared sites that are much narrower in diameter than those required for regular implants.

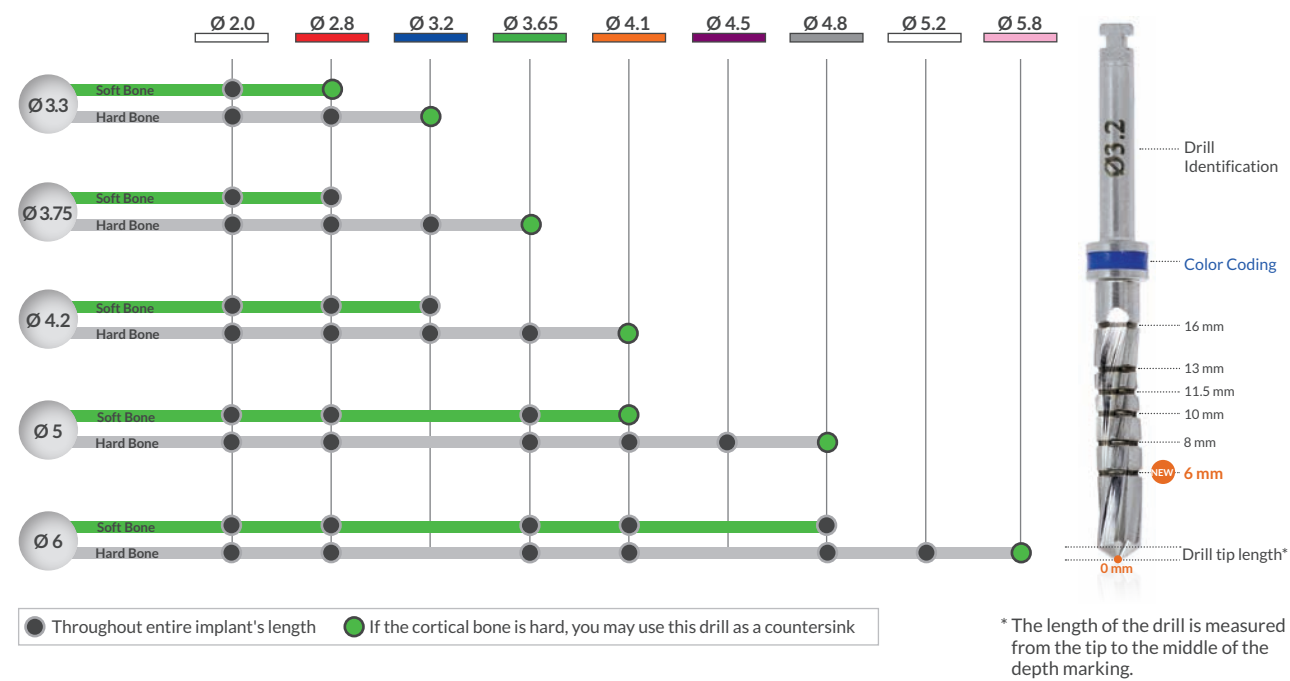
STABILIZATION AFTER EXTRACTION



STABILIZATION IN SOFT BONE



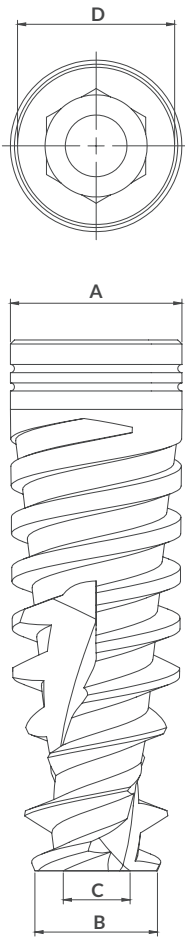
Drill Protocol



- Important:**
- In cases of extremely hard bone it is recommended to make adjustments to the specific site.
 - The drill tip length should be considered when preparing the osteotomy.
 - While the protocol is recommended for most clinical cases, additional professional consideration may be required in specific cases.

Ordering Information and Dimensions

Diameter	Length	Ref. No.	Dimensions			
			A	B	C	D
Ø 3.3	8 mm	1308	Ø 3.7	Ø 2.55	Ø 1.55	Ø 3.5
	10 mm	1300	Ø 3.7	Ø 2.55	Ø 1.55	Ø 3.5
	11.5 mm	1301	Ø 3.7	Ø 2.55	Ø 1.55	Ø 3.5
	13 mm	1303	Ø 3.7	Ø 2.55	Ø 1.55	Ø 3.5
Ø 3.75	16 mm	1306	Ø 3.7	Ø 2.55	Ø 1.55	Ø 3.5
	8 mm	1358	Ø 3.85	Ø 2.9	Ø 2	Ø 3.5
	10 mm	1350	Ø 3.85	Ø 2.9	Ø 2	Ø 3.5
	11.5 mm	1351	Ø 3.85	Ø 2.9	Ø 2	Ø 3.5
Ø 4.2	13 mm	1353	Ø 3.85	Ø 2.9	Ø 2	Ø 3.5
	16 mm	1356	Ø 3.85	Ø 2.9	Ø 2	Ø 3.5
	8 mm	1338	Ø 4.2	Ø 3	Ø 2.1	Ø 3.85
	10 mm	1330	Ø 4.2	Ø 3	Ø 2.1	Ø 3.85
Ø 5	11.5 mm	1331	Ø 4.2	Ø 3	Ø 2.1	Ø 3.85
	13 mm	1333	Ø 4.2	Ø 3	Ø 2.1	Ø 3.85
	16 mm	1336	Ø 4.2	Ø 3	Ø 2.1	Ø 3.85
	8 mm	1348	Ø 4.95	Ø 3.3	Ø 2.6	Ø 3.85
Ø 6	10 mm	1340	Ø 4.95	Ø 3.3	Ø 2.6	Ø 3.85
	11.5 mm	1341	Ø 4.95	Ø 3.3	Ø 2.6	Ø 3.85
	13 mm	1343	Ø 4.95	Ø 3.3	Ø 2.6	Ø 3.85
	16 mm	1346	Ø 4.95	Ø 3.3	Ø 2.6	Ø 3.85
Ø 3.3	8 mm	1368	Ø 5.95	Ø 4.6	Ø 3.35	Ø 3.85
	10 mm	1360	Ø 5.95	Ø 4.6	Ø 3.45	Ø 3.85
	11.5 mm	1361	Ø 5.95	Ø 4.6	Ø 3.45	Ø 3.85
	13 mm	1363	Ø 5.95	Ø 4.6	Ø 3.45	Ø 3.85



SPI – Why?

- Achieves very high primary stability
- Enables the changing of direction during placement
- Can penetrate smaller diameter prepared sites
- Ideal for immediate loading and immediate implantation
- Ideal for soft bone

Ⓡ

Implant System



Smart Implantology Solutions



OUR WARRANTY - YOUR PEACE OF MIND

For more information, please visit our website www.alpha-bio.net

Alpha-Bio Tec's products are CE-marked in accordance with the Council Directive 93/42/EEC and Amendment 2007/47/EC.
Alpha-Bio Tec complies with ISO 13485:2012 and the Canadian Medical Devices Conformity Assessment System (CMDACS).

www.alpha-bio.net